

**DATASHEET**

**TARSL1 Rabbit Polyclonal Antibody**

CAT. NO. APA17051

**KEY FEATURES**

|               |   |               |                     |
|---------------|---|---------------|---------------------|
| Target        | TARSL1  | Source / Host | Rabbit              |
| Reactivity    | Human, Mouse, Rat   | Clonality     | Polyclonal          |
| Applications  | WB  | Conjugation   | Unconjugated        |
| Form / Buffer | Liquid in 0.42% Potassium phosphate, 0.87% Sodium chloride, pH 7.3, 30% glycerol, and 0.01% sodium azide. |               | Storage<br>at -20°C |

**BACKGROUND**

Catalyzes the attachment of threonine to tRNA(Thr) in a two-step reaction: threonine is first activated by ATP to form Thr-AMP and then transferred to the acceptor end of tRNA(Thr). Also edits incorrectly charged tRNA(Thr) via its editing domain.

**APPLICATION**

To ensure optimal assay performance, AREX recommends conducting reagent titration tailored to each testing system for optimal detection results.

|    |                |
|----|----------------|
| WB | 1:500 - 1:2000 |
|----|----------------|

\*Results are sample-specific. Please refer to your local assay conditions and test parameters for reference.

**PRODUCT OVERVIEW**

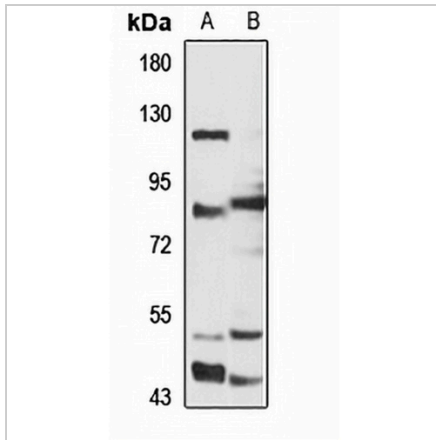
|                   |  |
|-------------------|--|
| Description       | Rabbit polyclonal antibody to TARSL1   |
| Specificity       | Recognizes endogenous levels of TARSL1 protein   |
| Antibody Type     | Primary antibody   |
| Immunogen         | Recombinant fusion protein of human TARSL1. The exact sequence is proprietary.                                 |
| Purification      | The antibody was purified by immunogen affinity chromatography.  |
| Molecular Weight  | Predicted: 66; Observed: 81 kD   |
| Form/Buffer       | Liquid in 0.42% Potassium phosphate, 0.87% Sodium chloride, pH 7.3, 30% glycerol, and 0.01% sodium azide.      |
| Alternative Names | TARSL1; Threonine--tRNA ligase mitochondrial; Threonyl-tRNA synthetase; ThrRS; Threonyl-tRNA synthetase-like 1 |
| Gene Symbol       | TARS2  |
| Entrez Gene       | 80222(Human); 71807(Mouse); 310672(Rat)  |
| SwissProt         | Q9BW92(Human); Q3UQ84(Mouse); Q68FW7(Rat)  |

\*AREX continuously optimizes our products. Webpage content may not reflect the latest updates. For inquiries, please contact [info@arexbio.com](mailto:info@arexbio.com) or your local distributor.

\*Clone Number, Reactivity, Source/Host and Clonality can be found in the product name and Key Features section above.

**DATASHEET****TARSL1 Rabbit Polyclonal Antibody**

CAT. NO. APA17051

**DATA**

Western blot analysis of TARSL1 expression in U87MG (A), mouse brain (B) whole cell lysates. (Predicted band size: 66; 81 kD; Observed band size: 81 kD)

**STORAGE**

Store at 4°C short term. For long term storage, store at -20°C, avoiding freeze/thaw cycles.

**NOTE**

For Research Use Only. Not for diagnostic, therapeutics, prophylactic or in vivo use.