

DATASHEET

TAS1R3 Rabbit Polyclonal Antibody

CAT. NO. APA17054

KEY FEATURES

Target	TAS1R3	Source / Host	Rabbit
Reactivity	Human, Mouse, Rat	Clonality	Polyclonal
Applications	WB	Conjugation	Unconjugated
Form / Buffer	Liquid in 0.42% Potassium phosphate, 0.87% Sodium chloride, pH 7.3, 30% glycerol, and 0.01% sodium azide.		Storage at -20°C

BACKGROUND

Putative taste receptor. TAS1R1/TAS1R3 responds to the umami taste stimulus (the taste of monosodium glutamate). TAS1R2/TAS1R3 recognizes diverse natural and synthetic sweeteners. TAS1R3 is essential for the recognition and response to the disaccharide trehalose. Sequence differences within and between species can significantly influence the selectivity and specificity of taste responses.

APPLICATION

To ensure optimal assay performance, AREX recommends conducting reagent titration tailored to each testing system for optimal detection results.

WB	1:500 - 1:2000
----	----------------

*Results are sample-specific. Please refer to your local assay conditions and test parameters for reference.

PRODUCT OVERVIEW

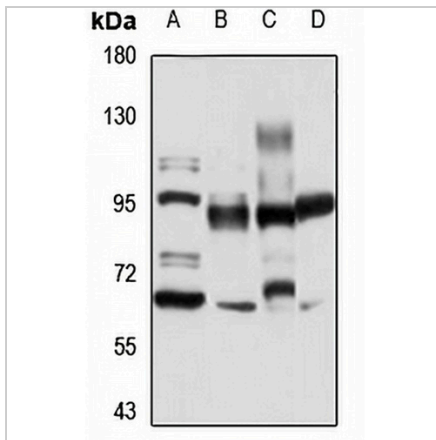
Description	Rabbit polyclonal antibody to TAS1R3
Specificity	Recognizes endogenous levels of TAS1R3 protein
Antibody Type	Primary antibody
Immunogen	Recombinant fusion protein of human TAS1R3. The exact sequence is proprietary.
Purification	The antibody was purified by immunogen affinity chromatography.
Molecular Weight	Predicted: 93 kD; Observed: 93 kD
Form/Buffer	Liquid in 0.42% Potassium phosphate, 0.87% Sodium chloride, pH 7.3, 30% glycerol, and 0.01% sodium azide.
Alternative Names	T1R3; TR3; Taste receptor type 1 member 3; Sweet taste receptor T1R3
Gene Symbol	TAS1R3
Entrez Gene	83756(Human); 83771(Mouse); 170634(Rat)
SwissProt	Q7RTX0(Human); Q925D8(Mouse); Q923K1(Rat)

*AREX continuously optimizes our products. Webpage content may not reflect the latest updates. For inquiries, please contact info@arexbio.com or your local distributor.

*Clone Number, Reactivity, Source/Host and Clonality can be found in the product name and Key Features section above.

DATASHEET**TAS1R3 Rabbit Polyclonal Antibody**

CAT. NO. APA17054

DATA

Western blot analysis of TAS1R3 expression in LO2 (A), mouse brain (B), rat kidney (C), rat heart (D) whole cell lysates. (Predicted band size: 93 kD; Observed band size: 93 kD)

STORAGE

Store at 4°C short term. For long term storage, store at -20°C, avoiding freeze/thaw cycles.

NOTE

For Research Use Only. Not for diagnostic, therapeutics, prophylactic or in vivo use.