

DATASHEET

TBC1D15 Rabbit Polyclonal Antibody

CAT. NO. APA17056

KEY FEATURES

Target	TBC1D15	Source / Host	Rabbit
Reactivity	Human, Mouse	Clonality	Polyclonal
Applications	WB	Conjugation	Unconjugated
Form / Buffer	Liquid in 0.42% Potassium phosphate, 0.87% Sodium chloride, pH 7.3, 30% glycerol, and 0.01% sodium azide.		Storage at -20°C

BACKGROUND

Acts as a GTPase activating protein for RAB7A. Does not act on RAB4, RAB5 or RAB6 .

APPLICATION

To ensure optimal assay performance, AREX recommends conducting reagent titration tailored to each testing system for optimal detection results.

WB	1:500 - 1:2000
----	----------------

*Results are sample-specific. Please refer to your local assay conditions and test parameters for reference.

PRODUCT OVERVIEW

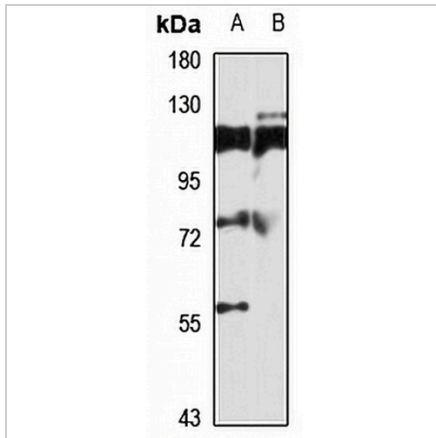
Description	Rabbit polyclonal antibody to TBC1D15
Specificity	Recognizes endogenous levels of TBC1D15 protein
Antibody Type	Primary antibody
Immunogen	Recombinant fusion protein of human TBC1D15. The exact sequence is proprietary.
Purification	The antibody was purified by immunogen affinity chromatography.
Molecular Weight	Predicted: 77; Observed: 79 kD
Form/Buffer	Liquid in 0.42% Potassium phosphate, 0.87% Sodium chloride, pH 7.3, 30% glycerol, and 0.01% sodium azide.
Alternative Names	TBC1 domain family member 15; GTPase-activating protein RAB7; GAP for RAB7; Rab7-GAP
Gene Symbol	TBC1D15
Entrez Gene	64786(Human); 66687(Mouse)
SwissProt	Q8TC07(Human); Q9CXF4(Mouse)

*AREX continuously optimizes our products. Webpage content may not reflect the latest updates. For inquiries, please contact info@arexbio.com or your local distributor.

*Clone Number, Reactivity, Source/Host and Clonality can be found in the product name and Key Features section above.

DATASHEET**TBC1D15 Rabbit Polyclonal Antibody**

CAT. NO. APA17056

DATA

Western blot analysis of TBC1D15 expression in A549 (A), mouse pancreas (B) whole cell lysates. (Predicted band size: 77; 78; 79 kD; Observed band size: 79 kD)

STORAGE

Store at 4°C short term. For long term storage, store at -20°C, avoiding freeze/thaw cycles.

NOTE

For Research Use Only. Not for diagnostic, therapeutics, prophylactic or in vivo use.