

DATASHEET

TBC1D23 Rabbit Polyclonal Antibody

CAT. NO. APA17057

KEY FEATURES

Target	TBC1D23	Source / Host	Rabbit
Reactivity	Human, Mouse	Clonality	Polyclonal
Applications	WB	Conjugation	Unconjugated
Form / Buffer	Liquid in 0.42% Potassium phosphate, 0.87% Sodium chloride, pH 7.3, 30% glycerol, and 0.01% sodium azide.		Storage at -20°C

BACKGROUND

Putative Rab GTPase-activating protein which plays a role in vesicular trafficking . Involved in endosome-to-Golgi trafficking. Acts as a bridging protein by binding simultaneously to golgins, including GOLGA1 and GOLGA4, located at the trans-Golgi, and to the WASH complex, located on endosome-derived vesicles . Together with WDR11 complex facilitates the golgin-mediated capture of vesicles generated using AP-1 . Plays a role in brain development, including in cortical neuron positioning . May also be important for neurite outgrowth, possibly through its involvement in membrane trafficking and cargo delivery, 2 processes that are essential for axonal and dendritic growth .

APPLICATION

To ensure optimal assay performance, AREX recommends conducting reagent titration tailored to each testing system for optimal detection results.

WB	1:500 - 1:2000
----	----------------

*Results are sample-specific. Please refer to your local assay conditions and test parameters for reference.

PRODUCT OVERVIEW

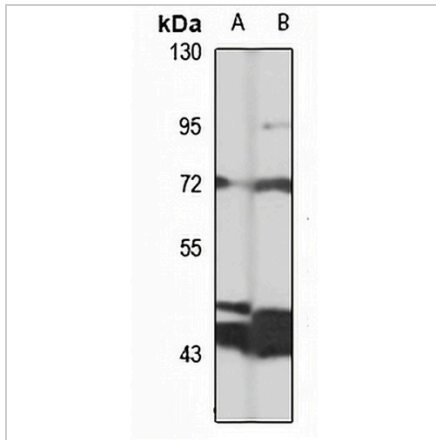
Description	Rabbit polyclonal antibody to TBC1D23
Specificity	Recognizes endogenous levels of TBC1D23 protein
Antibody Type	Primary antibody
Immunogen	Recombinant fusion protein of human TBC1D23. The exact sequence is proprietary.
Purification	The antibody was purified by immunogen affinity chromatography.
Molecular Weight	Predicted: 76; Observed: 72 kD
Form/Buffer	Liquid in 0.42% Potassium phosphate, 0.87% Sodium chloride, pH 7.3, 30% glycerol, and 0.01% sodium azide.
Alternative Names	NS4ATP1; TBC1 domain family member 23; HCV non-structural protein 4A-transactivated protein 1
Gene Symbol	TBC1D23
Entrez Gene	55773(Human); 67581(Mouse)
SwissProt	Q9NUY8(Human); Q8K0F1(Mouse)

*AREX continuously optimizes our products. Webpage content may not reflect the latest updates. For inquiries, please contact info@arexbio.com or your local distributor.

*Clone Number, Reactivity, Source/Host and Clonality can be found in the product name and Key Features section above.

DATASHEET**TBC1D23 Rabbit Polyclonal Antibody**

CAT. NO. APA17057

DATA

Western blot analysis of TBC1D23 expression in HT29 (A), mouse brain (B) whole cell lysates. (Predicted band size: 76; 78 kD; Observed band size: 72 kD)

STORAGE

Store at 4°C short term. For long term storage, store at -20°C, avoiding freeze/thaw cycles.

NOTE

For Research Use Only. Not for diagnostic, therapeutics, prophylactic or in vivo use.