

**DATASHEET**

**CKAP1 Rabbit Polyclonal Antibody**

CAT. NO. APA17059

**KEY FEATURES**

|               |   |               |                    |
|---------------|---|---------------|--------------------|
| Target        | CKAP1   | Source / Host | Rabbit             |
| Reactivity    | Human, Mouse  | Clonality     | Polyclonal         |
| Applications  | WB, IHC, IF/ICC   | Conjugation   | Unconjugated       |
| Form / Buffer | Liquid in 0.42% Potassium phosphate, 0.87% Sodium chloride, pH 7.3, 30% glycerol, and 0.01% sodium azide. |               | Storage<br>at-20°C |

**BACKGROUND**

Binds to alpha-tubulin folding intermediates after their interaction with cytosolic chaperonin in the pathway leading from newly synthesized tubulin to properly folded heterodimer. Involved in regulation of tubulin heterodimer dissociation. May function as a negative regulator of axonal growth.

**APPLICATION**

To ensure optimal assay performance, AREX recommends conducting reagent titration tailored to each testing system for optimal detection results.

|        |                |
|--------|----------------|
| WB     | 1:500 - 1:2000 |
| IHC    | 1:50 - 1:200   |
| IF/ICC | 1:50 - 1:200   |

\*Results are sample-specific. Please refer to your local assay conditions and test parameters for reference.

**PRODUCT OVERVIEW**

|                   |   |
|-------------------|---|
| Description       | Rabbit polyclonal antibody to CKAP1   |
| Specificity       | Recognizes endogenous levels of CKAP1 protein   |
| Antibody Type     | Primary antibody  |
| Immunogen         | Recombinant fusion protein of human CKAP1. The exact sequence is proprietary.   |
| Purification      | The antibody was purified by immunogen affinity chromatography.   |
| Molecular Weight  | Predicted: 21; Observed: 37 kD  |
| Form/Buffer       | Liquid in 0.42% Potassium phosphate, 0.87% Sodium chloride, pH 7.3, 30% glycerol, and 0.01% sodium azide.                                       |
| Alternative Names | CG22; CKAP1; Tubulin-folding cofactor B; Cytoskeleton-associated protein 1; Cytoskeleton-associated protein CKAPI; Tubulin-specific chaperone B |
| Gene Symbol       | TBCB  |
| Entrez Gene       | 1155(Human); 66411(Mouse)   |
| SwissProt         | Q99426(Human); Q9D1E6(Mouse)  |

\*AREX continuously optimizes our products. Webpage content may not reflect the latest updates. For inquiries, please contact [info@arexbio.com](mailto:info@arexbio.com) or your local distributor.

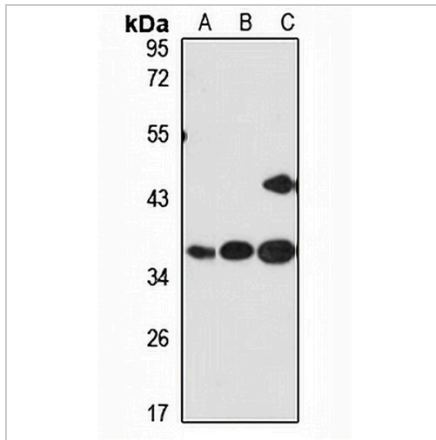
\*Clone Number, Reactivity, Source/Host and Clonality can be found in the product name and Key Features section above.

**DATASHEET**

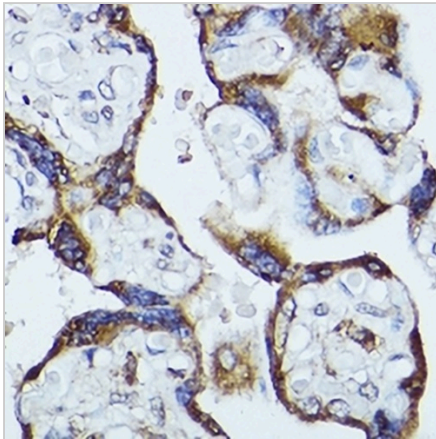
**CKAP1 Rabbit Polyclonal Antibody**

CAT. NO. APA17059

**DATA**



Western blot analysis of CKAP1 expression in Jurkat (A), mouse brain (B), mouse heart (C) whole cell lysates. (Predicted band size: 21; 27 kD; Observed band size: 37 kD)



Immunohistochemical analysis of CKAP1 staining in human placenta formalin fixed paraffin embedded tissue section. The section was pre-treated using heat mediated antigen retrieval with sodium citrate buffer (pH 6.0). The section was then incubated with the antibody at room temperature and detected using an HRP conjugated compact polymer system. DAB was used as the chromogen. The section was then counterstained with haematoxylin and mounted with DPX.

**STORAGE**

Store at 4°C short term. For long term storage, store at -20°C, avoiding freeze/thaw cycles.

**NOTE**

For Research Use Only. Not for diagnostic, therapeutics, prophylactic or in vivo use.