

DATASHEET

TBL3 Rabbit Polyclonal Antibody

CAT. NO. APA17064

KEY FEATURES

Target	TBL3	Source / Host	Rabbit
Reactivity	Human, Mouse, Rat	Clonality	Polyclonal
Applications	WB	Conjugation	Unconjugated
Form / Buffer	Liquid in 0.42% Potassium phosphate, 0.87% Sodium chloride, pH 7.3, 30% glycerol, and 0.01% sodium azide.		Storage at -20°C

BACKGROUND

Part of the small subunit (SSU) processome, first precursor of the small eukaryotic ribosomal subunit. During the assembly of the SSU processome in the nucleolus, many ribosome biogenesis factors, an RNA chaperone and ribosomal proteins associate with the nascent pre-rRNA and work in concert to generate RNA folding, modifications, rearrangements and cleavage as well as targeted degradation of pre-ribosomal RNA by the RNA exosome.

APPLICATION

To ensure optimal assay performance, AREX recommends conducting reagent titration tailored to each testing system for optimal detection results.

WB	1:500 - 1:2000
----	----------------

*Results are sample-specific. Please refer to your local assay conditions and test parameters for reference.

PRODUCT OVERVIEW

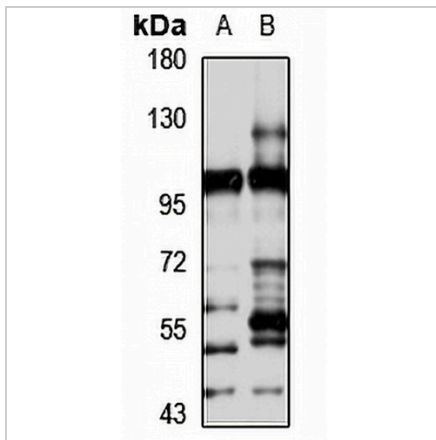
Description	Rabbit polyclonal antibody to TBL3
Specificity	Recognizes endogenous levels of TBL3 protein
Antibody Type	Primary antibody
Immunogen	Recombinant fusion protein of human TBL3. The exact sequence is proprietary.
Purification	The antibody was purified by immunogen affinity chromatography.
Molecular Weight	Predicted: 89 kD; Observed: 110 kD
Form/Buffer	Liquid in 0.42% Potassium phosphate, 0.87% Sodium chloride, pH 7.3, 30% glycerol, and 0.01% sodium azide.
Alternative Names	SAZD; Transducin beta-like protein 3; WD repeat-containing protein SAZD
Gene Symbol	TBL3
Entrez Gene	10607(Human); 213773(Mouse); 287120(Rat)
SwissProt	Q12788(Human); Q8C4J7(Mouse); Q5U2W5(Rat)

*AREX continuously optimizes our products. Webpage content may not reflect the latest updates. For inquiries, please contact info@arexbio.com or your local distributor.

*Clone Number, Reactivity, Source/Host and Clonality can be found in the product name and Key Features section above.

DATASHEET**TBL3 Rabbit Polyclonal Antibody**

CAT. NO. APA17064

DATA

Western blot analysis of TBL3 expression in HL60 (A), MCF7 (B) whole cell lysates. (Predicted band size: 89 kD; Observed band size: 110 kD)

STORAGE

Store at 4°C short term. For long term storage, store at -20°C, avoiding freeze/thaw cycles.

NOTE

For Research Use Only. Not for diagnostic, therapeutics, prophylactic or in vivo use.