

DATASHEET

TBX5 Rabbit Polyclonal Antibody

CAT. NO. APA17069

KEY FEATURES

Target	TBX5	Source / Host	Rabbit
Reactivity	Human	Clonality	Polyclonal
Applications	WB	Conjugation	Unconjugated
Form / Buffer	Liquid in 0.42% Potassium phosphate, 0.87% Sodium chloride, pH 7.3, 30% glycerol, and 0.01% sodium azide.		Storage at -20°C

BACKGROUND

DNA-binding protein that regulates the transcription of several genes and is involved in heart development and limb pattern formation . Binds to the core DNA motif of NPPA promoter .

APPLICATION

To ensure optimal assay performance, AREX recommends conducting reagent titration tailored to each testing system for optimal detection results.

WB	1:500 - 1:2000
----	----------------

*Results are sample-specific. Please refer to your local assay conditions and test parameters for reference.

PRODUCT OVERVIEW

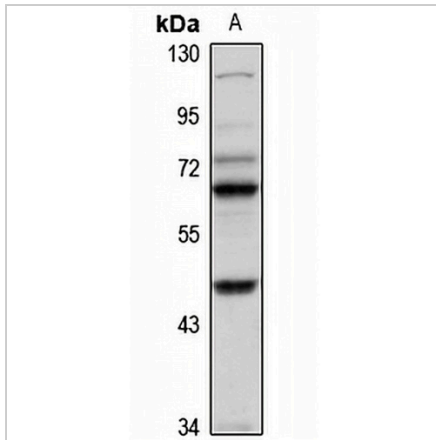
Description	Rabbit polyclonal antibody to TBX5
Specificity	Recognizes endogenous levels of TBX5 protein
Antibody Type	Primary antibody
Immunogen	Recombinant fusion protein of human TBX5. The exact sequence is proprietary.
Purification	The antibody was purified by immunogen affinity chromatography.
Molecular Weight	Predicted: 39; Observed: 58 kD
Form/Buffer	Liquid in 0.42% Potassium phosphate, 0.87% Sodium chloride, pH 7.3, 30% glycerol, and 0.01% sodium azide.
Alternative Names	T-box transcription factor TBX5; T-box protein 5
Gene Symbol	TBX5
Entrez Gene	6910(Human)
SwissProt	Q99593(Human)

*AREX continuously optimizes our products. Webpage content may not reflect the latest updates. For inquiries, please contact info@arexbio.com or your local distributor.

*Clone Number, Reactivity, Source/Host and Clonality can be found in the product name and Key Features section above.

DATASHEET**TBX5 Rabbit Polyclonal Antibody**

CAT. NO. APA17069

DATA

Western blot analysis of TBX5 expression in HeLa (A) whole cell lysates. (Predicted band size: 39; 52; 57 kD; Observed band size: 58 kD)

STORAGE

Store at 4°C short term. For long term storage, store at -20°C, avoiding freeze/thaw cycles.

NOTE

For Research Use Only. Not for diagnostic, therapeutics, prophylactic or in vivo use.