

DATASHEET

POD-1 Rabbit Polyclonal Antibody

CAT. NO. APA17073

KEY FEATURES

| | | | |
|---------------|---|---------------|--------------------|
| Target | POD-1 | Source / Host | Rabbit |
| Reactivity | Human | Clonality | Polyclonal |
| Applications | WB | Conjugation | Unconjugated |
| Form / Buffer | Liquid in 0.42% Potassium phosphate, 0.87% Sodium chloride, pH 7.3, 30% glycerol, and 0.01% sodium azide. | | Storage at-20°C |

BACKGROUND

Involved in epithelial-mesenchymal interactions in kidney and lung morphogenesis that include epithelial differentiation and branching morphogenesis. May play a role in the specification or differentiation of one or more subsets of epicardial cell types.

APPLICATION

To ensure optimal assay performance, AREX recommends conducting reagent titration tailored to each testing system for optimal detection results.

| | |
|----|----------------|
| WB | 1:500 - 1:2000 |
|----|----------------|

*Results are sample-specific. Please refer to your local assay conditions and test parameters for reference.

PRODUCT OVERVIEW

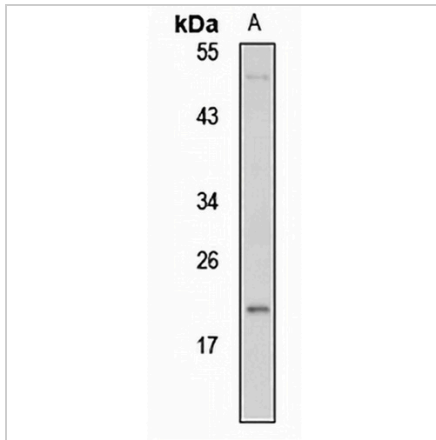
| | |
|-------------------|--|
| Description | Rabbit polyclonal antibody to POD-1 |
| Specificity | Recognizes endogenous levels of POD-1 protein |
| Antibody Type | Primary antibody |
| Immunogen | Recombinant fusion protein of human POD-1. The exact sequence is proprietary. |
| Purification | The antibody was purified by immunogen affinity chromatography. |
| Molecular Weight | Predicted: 20 kD; Observed: 20 kD |
| Form/Buffer | Liquid in 0.42% Potassium phosphate, 0.87% Sodium chloride, pH 7.3, 30% glycerol, and 0.01% sodium azide. |
| Alternative Names | BHLHA23; POD1; Transcription factor 21; TCF-21; Capsulin; Class A basic helix-loop-helix protein 23; bHLHa23; Epicardin; Podocyte-expressed 1; Pod-1 |
| Gene Symbol | TCF21 |
| Entrez Gene | 6943(Human) |
| SwissProt | O43680(Human) |

*AREX continuously optimizes our products. Webpage content may not reflect the latest updates. For inquiries, please contact info@arexbio.com or your local distributor.

*Clone Number, Reactivity, Source/Host and Clonality can be found in the product name and Key Features section above.

DATASHEET**POD-1 Rabbit Polyclonal Antibody**

CAT. NO. APA17073

DATA

Western blot analysis of POD-1 expression in A431 (A) whole cell lysates. (Predicted band size: 20 kD; Observed band size: 20 kD)

STORAGE

Store at 4°C short term. For long term storage, store at -20°C, avoiding freeze/thaw cycles.

NOTE

For Research Use Only. Not for diagnostic, therapeutics, prophylactic or in vivo use.