

**DATASHEET**

**TRAP1 Rabbit Polyclonal Antibody**

CAT. NO. APA17095

**KEY FEATURES**

Target	TRAP1	Source / Host	Rabbit
Reactivity	Human, Mouse	Clonality	Polyclonal
Applications	WB	Conjugation	Unconjugated
Form / Buffer	Liquid in 0.42% Potassium phosphate, 0.87% Sodium chloride, pH 7.3, 30% glycerol, and 0.01% sodium azide.		Storage at -20°C

**BACKGROUND**

Plays a role in the TGF-beta/activin signaling pathway. It associates with inactive heteromeric TGF-beta and activin receptor complexes, mainly through the type II receptor, and is released upon activation of signaling. May recruit SMAD4 to the vicinity of the receptor complex and facilitate its interaction with receptor-regulated Smads, such as SMAD2.

**APPLICATION**

To ensure optimal assay performance, AREX recommends conducting reagent titration tailored to each testing system for optimal detection results.

WB	1:500 - 1:2000
----	----------------

\*Results are sample-specific. Please refer to your local assay conditions and test parameters for reference.

**PRODUCT OVERVIEW**

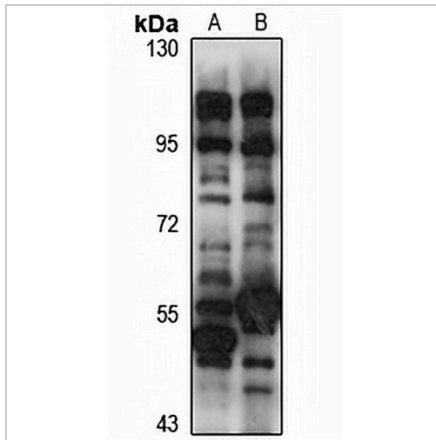
Description	Rabbit polyclonal antibody to TRAP1
Specificity	Recognizes endogenous levels of TRAP1 protein
Antibody Type	Primary antibody
Immunogen	Recombinant fusion protein of human TRAP1. The exact sequence is proprietary.
Purification	The antibody was purified by immunogen affinity chromatography.
Molecular Weight	Predicted: 97 kD; Observed: 97 kD
Form/Buffer	Liquid in 0.42% Potassium phosphate, 0.87% Sodium chloride, pH 7.3, 30% glycerol, and 0.01% sodium azide.
Alternative Names	Transforming growth factor-beta receptor-associated protein 1; TGF-beta receptor-associated protein 1; TRAP-1; TRAP1
Gene Symbol	TGFBRAP1
Entrez Gene	9392(Human); 73122(Mouse)
SwissProt	Q8WUH2(Human); Q3UR70(Mouse)

\*AREX continuously optimizes our products. Webpage content may not reflect the latest updates. For inquiries, please contact [info@arexbio.com](mailto:info@arexbio.com) or your local distributor.

\*Clone Number, Reactivity, Source/Host and Clonality can be found in the product name and Key Features section above.

**DATASHEET****TRAP1 Rabbit Polyclonal Antibody**

CAT. NO. APA17095

**DATA**

Western blot analysis of TRAP1 expression in HeLa (A), mouse brain (B) whole cell lysates.  
(Predicted band size: 97 kD; Observed band size: 97 kD)

**STORAGE**

Store at 4°C short term. For long term storage, store at -20°C, avoiding freeze/thaw cycles.

**NOTE**

For Research Use Only. Not for diagnostic, therapeutics, prophylactic or in vivo use.