

**DATASHEET**

**CTMP Rabbit Polyclonal Antibody**

CAT. NO. APA17098

**KEY FEATURES**

Target	CTMP	Source / Host	Rabbit
Reactivity	Human, Mouse, Rat	Clonality	Polyclonal
Applications	WB, IF/ICC	Conjugation	Unconjugated
Form / Buffer	Liquid in 0.42% Potassium phosphate, 0.87% Sodium chloride, pH 7.3, 30% glycerol, and 0.01% sodium azide.		Storage at-20°C

**BACKGROUND**

Has acyl-CoA thioesterase activity towards medium and long-chain (C14 to C18) fatty acyl-CoA substrates, and probably plays a role in mitochondrial fatty acid metabolism. Plays a role in the apoptotic process, possibly via its regulation of AKT1 activity. According to PubMed:11598301, inhibits AKT1 phosphorylation and activity. According to PubMed:17615157, enhances AKT1 activity by favoring its phosphorylation and translocation to plasma membrane.

**APPLICATION**

To ensure optimal assay performance, AREX recommends conducting reagent titration tailored to each testing system for optimal detection results.

WB	1:500 - 1:2000
IF/ICC	1:50 - 1:200

\*Results are sample-specific. Please refer to your local assay conditions and test parameters for reference.

**PRODUCT OVERVIEW**

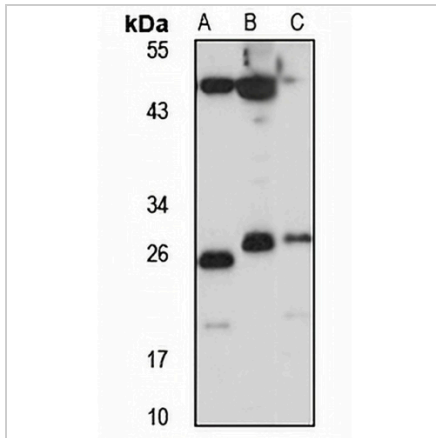
Description	Rabbit polyclonal antibody to CTMP
Specificity	Recognizes endogenous levels of CTMP protein
Antibody Type	Primary antibody
Immunogen	Recombinant fusion protein of human CTMP. The exact sequence is proprietary.
Purification	The antibody was purified by immunogen affinity chromatography.
Molecular Weight	Predicted: 27 kD; Observed: 25; 27 kD
Form/Buffer	Liquid in 0.42% Potassium phosphate, 0.87% Sodium chloride, pH 7.3, 30% glycerol, and 0.01% sodium azide.
Alternative Names	CTMP; Acyl-coenzyme A thioesterase THEM4; Acyl-CoA thioesterase THEM4; Carboxyl-terminal modulator protein; Thioesterase superfamily member 4
Gene Symbol	THEM4
Entrez Gene	117145(Human); 75778(Mouse); 361992(Rat)
SwissProt	Q5T1C6(Human); Q3UUI3(Mouse); Q566R0(Rat)

\*AREX continuously optimizes our products. Webpage content may not reflect the latest updates. For inquiries, please contact [info@arexbio.com](mailto:info@arexbio.com) or your local distributor.

\*Clone Number, Reactivity, Source/Host and Clonality can be found in the product name and Key Features section above.

**DATASHEET****CTMP Rabbit Polyclonal Antibody**

CAT. NO. APA17098

**DATA**

Western blot analysis of CTMP expression in HeLa (A), mouse brain (B), mouse testis (C) whole cell lysates. (Predicted band size: 27 kD; Observed band size: 25; 27 kD)

**STORAGE**

Store at 4°C short term. For long term storage, store at -20°C, avoiding freeze/thaw cycles.

**NOTE**

For Research Use Only. Not for diagnostic, therapeutics, prophylactic or in vivo use.