

DATASHEET

ICB1 Rabbit Polyclonal Antibody

CAT. NO. APA17099

KEY FEATURES

| | | | |
|---------------|---|---------------|---------------------|
| Target | ICB1 | Source / Host | Rabbit |
| Reactivity | Human, Mouse, Rat | Clonality | Polyclonal |
| Applications | WB, IF/ICC | Conjugation | Unconjugated |
| Form / Buffer | Liquid in 0.42% Potassium phosphate, 0.87% Sodium chloride, pH 7.3, 30% glycerol, and 0.01% sodium azide. | | Storage at -20°C |

BACKGROUND

May constitute a control point in macrophage inflammatory response, promoting LPS-induced TLR4-mediated TNF production . Determines the threshold for activation of B cells by low-affinity and low-avidity ligands via PLCG2 activation and its downstream pathways .

APPLICATION

To ensure optimal assay performance, AREX recommends conducting reagent titration tailored to each testing system for optimal detection results.

| | |
|--------|----------------|
| WB | 1:500 - 1:2000 |
| IF/ICC | 1:50 - 1:200 |

*Results are sample-specific. Please refer to your local assay conditions and test parameters for reference.

PRODUCT OVERVIEW

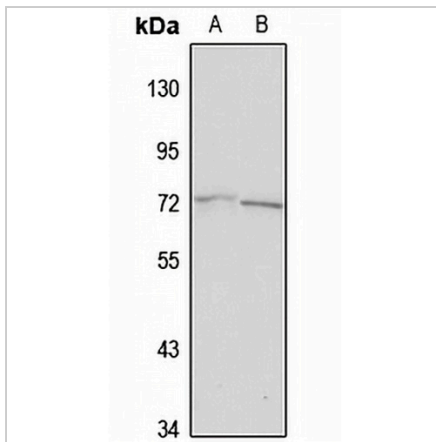
| | |
|-------------------|--|
| Description | Rabbit polyclonal antibody to ICB1 |
| Specificity | Recognizes endogenous levels of ICB1 protein |
| Antibody Type | Primary antibody |
| Immunogen | Recombinant fusion protein of human ICB1. The exact sequence is proprietary. |
| Purification | The antibody was purified by immunogen affinity chromatography. |
| Molecular Weight | Predicted: 13; Observed: 72 kD |
| Form/Buffer | Liquid in 0.42% Potassium phosphate, 0.87% Sodium chloride, pH 7.3, 30% glycerol, and 0.01% sodium azide. |
| Alternative Names | C1orf38; ICB1; Protein THEMIS2; Induced by contact to basement membrane 1 protein; Protein ICB-1; Thymocyte-expressed molecule involved in selection protein 2 |
| Gene Symbol | THEMIS2 |
| Entrez Gene | 9473(Human); 230787(Mouse) |
| SwissProt | Q5TEJ8(Human); Q91YX0(Mouse) |

*AREX continuously optimizes our products. Webpage content may not reflect the latest updates. For inquiries, please contact info@arexbio.com or your local distributor.

*Clone Number, Reactivity, Source/Host and Clonality can be found in the product name and Key Features section above.

DATASHEET**ICB1 Rabbit Polyclonal Antibody**

CAT. NO. APA17099

DATA

Western blot analysis of ICB1 expression in MCF7 (A), mouse spleen (B) whole cell lysates.
(Predicted band size: 13; 29; 50; 56; 57; 72 kD; Observed band size: 72 kD)

STORAGE

Store at 4°C short term. For long term storage, store at -20°C, avoiding freeze/thaw cycles.

NOTE

For Research Use Only. Not for diagnostic, therapeutics, prophylactic or in vivo use.