

DATASHEET

THOC6 Rabbit Polyclonal Antibody

CAT. NO. APA17102

KEY FEATURES

Target	THOC6	Source / Host	Rabbit
Reactivity	Human, Mouse	Clonality	Polyclonal
Applications	WB	Conjugation	Unconjugated
Form / Buffer	Liquid in 0.42% Potassium phosphate, 0.87% Sodium chloride, pH 7.3, 30% glycerol, and 0.01% sodium azide.		Storage at -20°C

BACKGROUND

Component of the THO subcomplex of the TREX complex which is thought to couple mRNA transcription, processing and nuclear export, and which specifically associates with spliced mRNA and not with unspliced pre-mRNA . Plays a key structural role in the oligomerization of the THO-DDX39B complex . TREX is recruited to spliced mRNAs by a transcription-independent mechanism, binds to mRNA upstream of the exon-junction complex (EJC) and is recruited in a splicing- and cap-dependent manner to a region near the 5' end of the mRNA where it functions in mRNA export to the cytoplasm via the TAP/NXF1 pathway . Plays a role in apoptosis negative control involved in brain development .

APPLICATION

To ensure optimal assay performance, AREX recommends conducting reagent titration tailored to each testing system for optimal detection results.

WB	1:500 - 1:2000
----	----------------

*Results are sample-specific. Please refer to your local assay conditions and test parameters for reference.

PRODUCT OVERVIEW

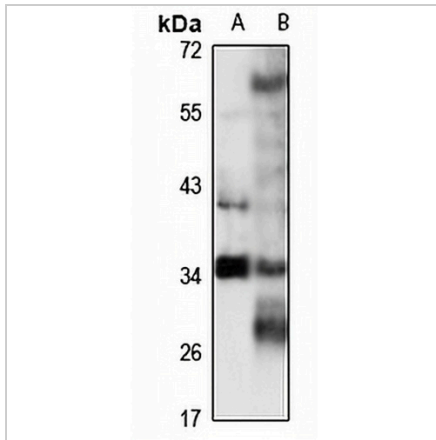
Description	Rabbit polyclonal antibody to THOC6
Specificity	Recognizes endogenous levels of THOC6 protein
Antibody Type	Primary antibody
Immunogen	KLH-conjugated synthetic peptide of human THOC6. The exact sequence is proprietary.
Purification	The antibody was purified by immunogen affinity chromatography.
Molecular Weight	Predicted: 32; Observed: 38 kD
Form/Buffer	Liquid in 0.42% Potassium phosphate, 0.87% Sodium chloride, pH 7.3, 30% glycerol, and 0.01% sodium azide.
Alternative Names	WDR58; THO complex subunit 6 homolog; Functional spliceosome-associated protein 35; fSAP35; WD repeat-containing protein 58
Gene Symbol	THOC6
Entrez Gene	79228(Human); 386612(Mouse)
SwissProt	Q86W42(Human); Q5U4D9(Mouse)

*AREX continuously optimizes our products. Webpage content may not reflect the latest updates. For inquiries, please contact info@arexbio.com or your local distributor.

*Clone Number, Reactivity, Source/Host and Clonality can be found in the product name and Key Features section above.

DATASHEET**THOC6 Rabbit Polyclonal Antibody**

CAT. NO. APA17102

DATA

Western blot analysis of THOC6 expression in HT29 (A), mouse ovary (B) whole cell lysates. (Predicted band size: 32; 34; 37 kD; Observed band size: 38 kD)

STORAGE

Store at 4°C short term. For long term storage, store at -20°C, avoiding freeze/thaw cycles.

NOTE

For Research Use Only. Not for diagnostic, therapeutics, prophylactic or in vivo use.