

DATASHEET

THOC7 Rabbit Polyclonal Antibody

CAT. NO. APA17103

KEY FEATURES

Target	THOC7	Source / Host	Rabbit
Reactivity	Human, Mouse, Rat	Clonality	Polyclonal
Applications	WB	Conjugation	Unconjugated
Form / Buffer	Liquid in 0.42% Potassium phosphate, 0.87% Sodium chloride, pH 7.3, 30% glycerol, and 0.01% sodium azide.		Storage at -20°C

BACKGROUND

Component of the THO subcomplex of the TREX complex which is thought to couple mRNA transcription, processing and nuclear export, and which specifically associates with spliced mRNA and not with unspliced pre-mRNA . Required for efficient export of polyadenylated RNA . Plays a key structural role in the oligomerization of the THO-DDX39B complex . TREX is recruited to spliced mRNAs by a transcription-independent mechanism, binds to mRNA upstream of the exon-junction complex (EJC) and is recruited in a splicing- and cap-dependent manner to a region near the 5' end of the mRNA where it functions in mRNA export to the cytoplasm via the TAP/NXF1 pathway .

APPLICATION

To ensure optimal assay performance, AREX recommends conducting reagent titration tailored to each testing system for optimal detection results.

WB	1:500 - 1:2000
----	----------------

*Results are sample-specific. Please refer to your local assay conditions and test parameters for reference.

PRODUCT OVERVIEW

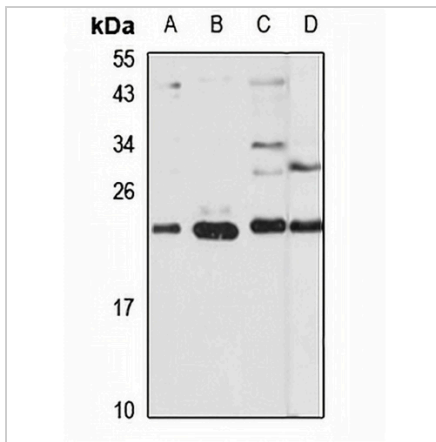
Description	Rabbit polyclonal antibody to THOC7
Specificity	Recognizes endogenous levels of THOC7 protein
Antibody Type	Primary antibody
Immunogen	Recombinant fusion protein of human THOC7. The exact sequence is proprietary.
Purification	The antibody was purified by immunogen affinity chromatography.
Molecular Weight	Predicted: 23 kD; Observed: 24 kD
Form/Buffer	Liquid in 0.42% Potassium phosphate, 0.87% Sodium chloride, pH 7.3, 30% glycerol, and 0.01% sodium azide.
Alternative Names	NIF3L1BP1; THO complex subunit 7 homolog; Functional spliceosome-associated protein 24; fSAP24; Ngg1-interacting factor 3-like protein 1-binding protein 1; NIF3L1-binding protein 1; hTREX30
Gene Symbol	THOC7
Entrez Gene	80145(Human); 66231(Mouse)
SwissProt	Q6I9Y2(Human); Q7TMY4(Mouse)

*AREX continuously optimizes our products. Webpage content may not reflect the latest updates. For inquiries, please contact info@arexbio.com or your local distributor.

*Clone Number, Reactivity, Source/Host and Clonality can be found in the product name and Key Features section above.

DATASHEET**THOC7 Rabbit Polyclonal Antibody**

CAT. NO. APA17103

DATA

Western blot analysis of THOC7 expression in A431 (A), HEK293T (B), mouse kidney (C), rat brain (D) whole cell lysates. (Predicted band size: 23 kD; Observed band size: 24 kD)

STORAGE

Store at 4°C short term. For long term storage, store at -20°C, avoiding freeze/thaw cycles.

NOTE

For Research Use Only. Not for diagnostic, therapeutics, prophylactic or in vivo use.