

DATASHEET

THUMPD2 Rabbit Polyclonal Antibody

CAT. NO. APA17105

KEY FEATURES

Target	THUMPD2	Source / Host	Rabbit
Reactivity	Human, Mouse, Rat	Clonality	Polyclonal
Applications	WB	Conjugation	Unconjugated
Form / Buffer	Liquid in 0.42% Potassium phosphate, 0.87% Sodium chloride, pH 7.3, 30% glycerol, and 0.01% sodium azide.		Storage at -20°C

BACKGROUND

Catalytic subunit of the THUMPD2-TRM112 methyltransferase complex, that specifically mediates the S-adenosyl-L-methionine-dependent N(2)-methylation of guanosine nucleotides, most probably at position 72 (m2G72), in the U6snRNA of the major spliceosome -methylation of guanosine nucleotides, most probably at position 72 (m2G72), in the U6snRNA of the major spliceosome . This modification in the U6 snRNA affects the constitutive splicing efficiency of introns that have suboptimal splice sites and can impact final mRNA levels .

APPLICATION

To ensure optimal assay performance, AREX recommends conducting reagent titration tailored to each testing system for optimal detection results.

WB	1:500 - 1:2000
----	----------------

*Results are sample-specific. Please refer to your local assay conditions and test parameters for reference.

PRODUCT OVERVIEW

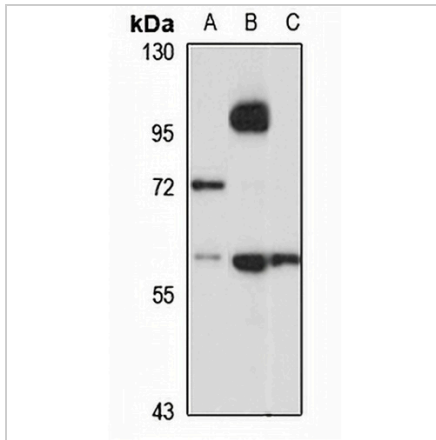
Description	Rabbit polyclonal antibody to THUMPD2
Specificity	Recognizes endogenous levels of THUMPD2 protein
Antibody Type	Primary antibody
Immunogen	Recombinant fusion protein of human THUMPD2. The exact sequence is proprietary.
Purification	The antibody was purified by immunogen affinity chromatography.
Molecular Weight	Predicted: 34; Observed: 56 kD
Form/Buffer	Liquid in 0.42% Potassium phosphate, 0.87% Sodium chloride, pH 7.3, 30% glycerol, and 0.01% sodium azide.
Alternative Names	C2orf8; THUMP domain-containing protein 2
Gene Symbol	THUMPD2
Entrez Gene	80745(Human); 72167(Mouse)
SwissProt	Q9BTF0(Human); Q9CZB3(Mouse)

*AREX continuously optimizes our products. Webpage content may not reflect the latest updates. For inquiries, please contact info@arexbio.com or your local distributor.

*Clone Number, Reactivity, Source/Host and Clonality can be found in the product name and Key Features section above.

DATASHEET**THUMPD2 Rabbit Polyclonal Antibody**

CAT. NO. APA17105

DATA**STORAGE**

Store at 4°C short term. For long term storage, store at -20°C, avoiding freeze/thaw cycles.

NOTE

For Research Use Only. Not for diagnostic, therapeutics, prophylactic or in vivo use.