

**DATASHEET**

**TRAM Rabbit Polyclonal Antibody**

CAT. NO. APA17109

**KEY FEATURES**

Target	TRAM	Source / Host	Rabbit
Reactivity	Human	Clonality	Polyclonal
Applications	WB	Conjugation	Unconjugated
Form / Buffer	Liquid in 0.42% Potassium phosphate, 0.87% Sodium chloride, pH 7.3, 30% glycerol, and 0.01% sodium azide.		Storage at -20°C

**BACKGROUND**

Functions as a sorting adapter in different signaling pathways to facilitate downstream signaling leading to type I interferon induction . In TLR4 signaling, physically bridges TLR4 and TICAM1 and functionally transmits signal to TICAM1 in early endosomes after endocytosis of TLR4. In TLR2 signaling, physically bridges TLR2 and MYD88 and is required for the TLR2-dependent movement of MYD88 to endosomes following ligand engagement . Involved in IL-18 signaling and is proposed to function as a sorting adapter for MYD88 in IL-18 signaling during adaptive immune response . Forms a complex with RAB11FIP2 that is recruited to the phagosomes to promote the activation of the actin-regulatory GTPases RAC1 and CDC42 and subsequent phagocytosis of Gram-negative bacteria .

**APPLICATION**

To ensure optimal assay performance, AREX recommends conducting reagent titration tailored to each testing system for optimal detection results.

WB	1:500 - 1:2000
----	----------------

\*Results are sample-specific. Please refer to your local assay conditions and test parameters for reference.

**PRODUCT OVERVIEW**

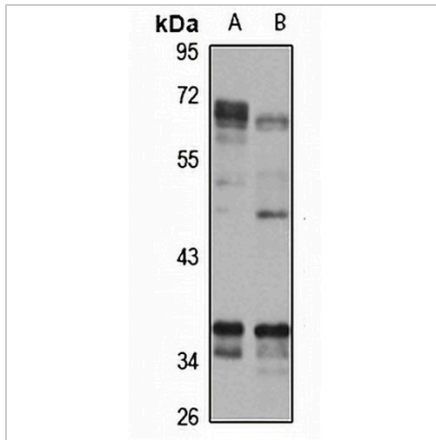
Description	Rabbit polyclonal antibody to TRAM
Specificity	Recognizes endogenous levels of TRAM protein
Antibody Type	Primary antibody
Immunogen	Recombinant fusion protein of human TRAM. The exact sequence is proprietary.
Purification	The antibody was purified by immunogen affinity chromatography.
Molecular Weight	Predicted: 26; Observed: 37 kD
Form/Buffer	Liquid in 0.42% Potassium phosphate, 0.87% Sodium chloride, pH 7.3, 30% glycerol, and 0.01% sodium azide.
Alternative Names	TIRAP3; TIRP; TRAM; TIR domain-containing adapter molecule 2; TICAM-2; Putative NF-kappa-B-activating protein 502; TRIF-related adapter molecule; Toll-like receptor adaptor protein 3; Toll/interleukin-1 receptor domain-containing protein; MyD88-4
Gene Symbol	TICAM2
Entrez Gene	100302736; 353376(Human)
SwissProt	Q86XR7(Human)

\*AREX continuously optimizes our products. Webpage content may not reflect the latest updates. For inquiries, please contact [info@arexbio.com](mailto:info@arexbio.com) or your local distributor.

\*Clone Number, Reactivity, Source/Host and Clonality can be found in the product name and Key Features section above.

**DATASHEET****TRAM Rabbit Polyclonal Antibody**

CAT. NO. APA17109

**DATA**

Western blot analysis of TRAM expression in Jurkat (A), SW480 (B) whole cell lysates.  
(Predicted band size: 26; 46 kD; Observed band size: 37 kD)

**STORAGE**

Store at 4°C short term. For long term storage, store at -20°C, avoiding freeze/thaw cycles.

**NOTE**

For Research Use Only. Not for diagnostic, therapeutics, prophylactic or in vivo use.