

DATASHEET

Tim50 Rabbit Polyclonal Antibody

CAT. NO. APA17113

KEY FEATURES

Target	Tim50	Source / Host	Rabbit
Reactivity	Human, Mouse	Clonality	Polyclonal
Applications	WB	Conjugation	Unconjugated
Form / Buffer	Liquid in 0.42% Potassium phosphate, 0.87% Sodium chloride, pH 7.3, 30% glycerol, and 0.01% sodium azide.		Storage at -20°C

BACKGROUND

Essential component of the TIM23 complex, a complex that mediates the translocation of transit peptide-containing proteins across the mitochondrial inner membrane. Has some phosphatase activity in vitro; however such activity may not be relevant in vivo.

APPLICATION

To ensure optimal assay performance, AREX recommends conducting reagent titration tailored to each testing system for optimal detection results.

WB	1:500 - 1:2000
----	----------------

*Results are sample-specific. Please refer to your local assay conditions and test parameters for reference.

PRODUCT OVERVIEW

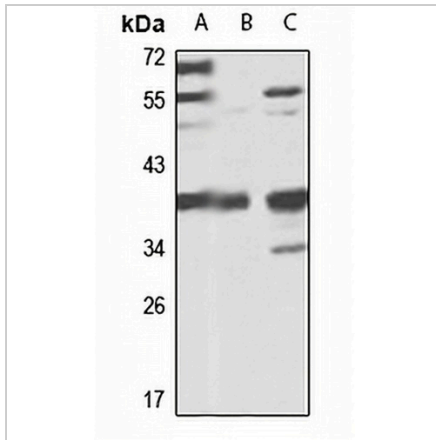
Description	Rabbit polyclonal antibody to Tim50
Specificity	Recognizes endogenous levels of Tim50 protein
Antibody Type	Primary antibody
Immunogen	Recombinant fusion protein of human Tim50. The exact sequence is proprietary.
Purification	The antibody was purified by immunogen affinity chromatography.
Molecular Weight	Predicted: 27; Observed: 39 kD
Form/Buffer	Liquid in 0.42% Potassium phosphate, 0.87% Sodium chloride, pH 7.3, 30% glycerol, and 0.01% sodium azide.
Alternative Names	TIM50; Mitochondrial import inner membrane translocase subunit TIM50
Gene Symbol	TIMM50
Entrez Gene	92609(Human); 66525(Mouse)
SwissProt	Q3ZCQ8(Human); Q9D880(Mouse)

*AREX continuously optimizes our products. Webpage content may not reflect the latest updates. For inquiries, please contact info@arexbio.com or your local distributor.

*Clone Number, Reactivity, Source/Host and Clonality can be found in the product name and Key Features section above.

DATASHEET**Tim50 Rabbit Polyclonal Antibody**

CAT. NO. APA17113

DATA

Western blot analysis of Tim50 expression in B cells (A), mouse heart (B), mouse kidney (C) whole cell lysates. (Predicted band size: 27; 39; 50 kD; Observed band size: 39 kD)

STORAGE

Store at 4°C short term. For long term storage, store at -20°C, avoiding freeze/thaw cycles.

NOTE

For Research Use Only. Not for diagnostic, therapeutics, prophylactic or in vivo use.