

DATASHEET

TIMMDC1 Rabbit Polyclonal Antibody

CAT. NO. APA17115

KEY FEATURES

Target	TIMMDC1	Source / Host	Rabbit
Reactivity	Human, Mouse, Rat	Clonality	Polyclonal
Applications	WB, IHC	Conjugation	Unconjugated
Form / Buffer	Liquid in 0.42% Potassium phosphate, 0.87% Sodium chloride, pH 7.3, 30% glycerol, and 0.01% sodium azide.		Storage at -20°C

BACKGROUND

Chaperone protein involved in the assembly of the mitochondrial NADH:ubiquinone oxidoreductase complex (complex I). Participates in constructing the membrane arm of complex I.

APPLICATION

To ensure optimal assay performance, AREX recommends conducting reagent titration tailored to each testing system for optimal detection results.

WB	1:500 - 1:2000
IHC	1:50 - 1:200

*Results are sample-specific. Please refer to your local assay conditions and test parameters for reference.

PRODUCT OVERVIEW

Description	Rabbit polyclonal antibody to TIMMDC1
Specificity	Recognizes endogenous levels of TIMMDC1 protein
Antibody Type	Primary antibody
Immunogen	Recombinant fusion protein of human TIMMDC1. The exact sequence is proprietary.
Purification	The antibody was purified by immunogen affinity chromatography.
Molecular Weight	Predicted: 32 kD; Observed: 32 kD
Form/Buffer	Liquid in 0.42% Potassium phosphate, 0.87% Sodium chloride, pH 7.3, 30% glycerol, and 0.01% sodium azide.
Alternative Names	C3orf1; Complex I assembly factor TIMMDC1 mitochondrial; Protein M5-14; Translocase of inner mitochondrial membrane domain-containing protein 1
Gene Symbol	TIMMDC1
Entrez Gene	51300(Human); 76916(Mouse); 303922(Rat)
SwissProt	Q9NPL8(Human); Q8BUY5(Mouse); Q6AY94(Rat)

*AREX continuously optimizes our products. Webpage content may not reflect the latest updates. For inquiries, please contact info@arexbio.com or your local distributor.

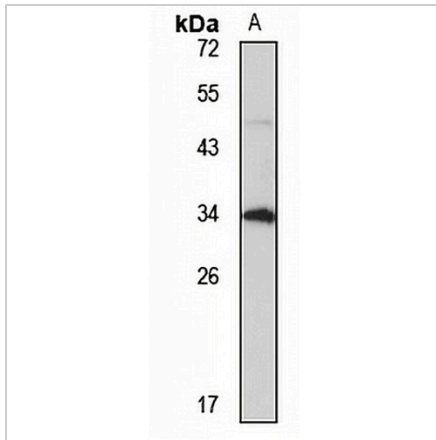
*Clone Number, Reactivity, Source/Host and Clonality can be found in the product name and Key Features section above.

DATASHEET

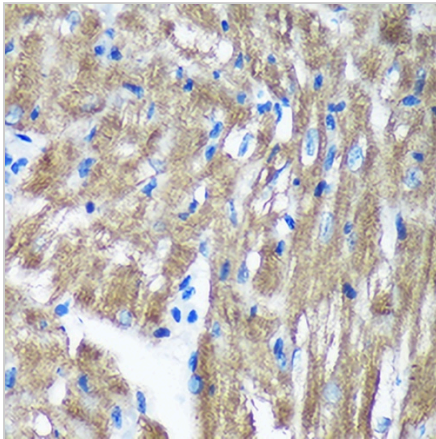
TIMMDC1 Rabbit Polyclonal Antibody

CAT. NO. APA17115

DATA



Western blot analysis of TIMMDC1 expression in A375 (A) whole cell lysates. (Predicted band size: 32 kD; Observed band size: 32 kD)



Immunohistochemical analysis of TIMMDC1 staining in mouse heart formalin fixed paraffin embedded tissue section. The section was pre-treated using heat mediated antigen retrieval with sodium citrate buffer (pH 6.0). The section was then incubated with the antibody at room temperature and detected using an HRP conjugated compact polymer system. DAB was used as the chromogen. The section was then counterstained with haematoxylin and mounted with DPX.

STORAGE

Store at 4°C short term. For long term storage, store at -20°C, avoiding freeze/thaw cycles.

NOTE

For Research Use Only. Not for diagnostic, therapeutics, prophylactic or in vivo use.