

DATASHEET

TINAGL1 Rabbit Polyclonal Antibody

CAT. NO. APA17116

KEY FEATURES

Target	TINAGL1	Source / Host	Rabbit
Reactivity	Human, Mouse, Rat	Clonality	Polyclonal
Applications	WB, IF/ICC	Conjugation	Unconjugated
Form / Buffer	Liquid in 0.42% Potassium phosphate, 0.87% Sodium chloride, pH 7.3, 30% glycerol, and 0.01% sodium azide.		Storage at-20°C

BACKGROUND

May be implicated in the adrenocortical zonation and in mechanisms for repressing the CYP11B1 gene expression in adrenocortical cells. This is a non catalytic peptidase C1 family protein .

APPLICATION

To ensure optimal assay performance, AREX recommends conducting reagent titration tailored to each testing system for optimal detection results.

WB	1:500 - 1:2000
IF/ICC	1:50 - 1:200

*Results are sample-specific. Please refer to your local assay conditions and test parameters for reference.

PRODUCT OVERVIEW

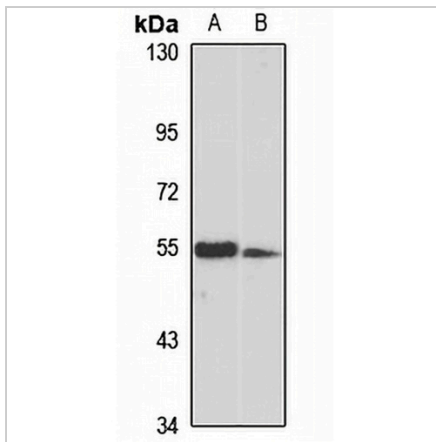
Description	Rabbit polyclonal antibody to TINAGL1
Specificity	Recognizes endogenous levels of TINAGL1 protein
Antibody Type	Primary antibody
Immunogen	Recombinant fusion protein of human TINAGL1. The exact sequence is proprietary.
Purification	The antibody was purified by immunogen affinity chromatography.
Molecular Weight	Predicted: 30; Observed: 52 kD
Form/Buffer	Liquid in 0.42% Potassium phosphate, 0.87% Sodium chloride, pH 7.3, 30% glycerol, and 0.01% sodium azide.
Alternative Names	GIS5; LCN7; OLRG2; TINAGL; Tubulointerstitial nephritis antigen-like; Glucocorticoid-inducible protein 5; Oxidized LDL-responsive gene 2 protein; OLRG-2; Tubulointerstitial nephritis antigen-related protein; TIN Ag-related protein; TIN-Ag-RP
Gene Symbol	TINAGL1
Entrez Gene	64129(Human); 94242(Mouse); 94174(Rat)
SwissProt	Q9GZM7(Human); Q99JR5(Mouse); Q9EQT5(Rat)

*AREX continuously optimizes our products. Webpage content may not reflect the latest updates. For inquiries, please contact info@arexbio.com or your local distributor.

*Clone Number, Reactivity, Source/Host and Clonality can be found in the product name and Key Features section above.

DATASHEET**TINAGL1 Rabbit Polyclonal Antibody**

CAT. NO. APA17116

DATA

Western blot analysis of TINAGL1 expression in mouse heart (A), rat heart (B) whole cell lysates. (Predicted band size: 30; 48; 52 kD; Observed band size: 52 kD)

STORAGE

Store at 4°C short term. For long term storage, store at -20°C, avoiding freeze/thaw cycles.

NOTE

For Research Use Only. Not for diagnostic, therapeutics, prophylactic or in vivo use.