

## DATASHEET

# TIPARP Rabbit Polyclonal Antibody

CAT. NO. APA17117

### KEY FEATURES

Target	TIPARP	Source / Host	Rabbit
Reactivity	Human, Mouse, Rat	Clonality	Polyclonal
Applications	WB	Conjugation	Unconjugated
Form / Buffer	Liquid in 0.42% Potassium phosphate, 0.87% Sodium chloride, pH 7.3, 30% glycerol, and 0.01% sodium azide.		Storage at -20°C

### BACKGROUND

ADP-ribosyltransferase that mediates mono-ADP-ribosylation of glutamate, aspartate and cysteine residues on target proteins . Acts as a negative regulator of AHR by mediating mono-ADP-ribosylation of AHR, leading to inhibit transcription activator activity of AHR .

### APPLICATION

To ensure optimal assay performance, AREX recommends conducting reagent titration tailored to each testing system for optimal detection results.

WB	1:500 - 1:2000
----	----------------

\*Results are sample-specific. Please refer to your local assay conditions and test parameters for reference.

### PRODUCT OVERVIEW

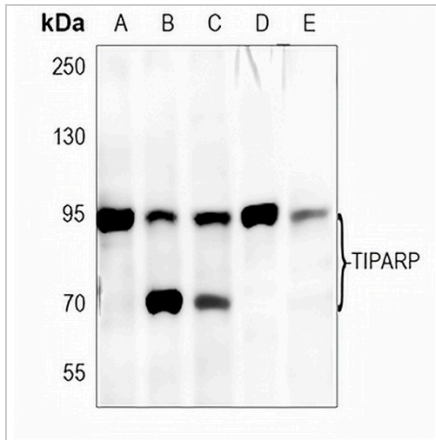
Description	Rabbit polyclonal antibody to TIPARP
Specificity	Recognizes endogenous levels of TIPARP protein
Antibody Type	Primary antibody
Immunogen	Recombinant fusion protein of human TIPARP. The exact sequence is proprietary.
Purification	The antibody was purified by immunogen affinity chromatography.
Molecular Weight	Predicted: 76 kD; Observed: 95, 70 kD
Form/Buffer	Liquid in 0.42% Potassium phosphate, 0.87% Sodium chloride, pH 7.3, 30% glycerol, and 0.01% sodium azide.
Alternative Names	PARP7; TCDD-inducible poly [ADP-ribose] polymerase; ADP-ribosyltransferase diphtheria toxin-like 14; ARTD14; Poly [ADP-ribose] polymerase 7; PARP-7
Gene Symbol	TIPARP
Entrez Gene	25976(Human); 99929(Mouse)
SwissProt	Q7Z3E1(Human); Q8C1B2(Mouse)

\*AREX continuously optimizes our products. Webpage content may not reflect the latest updates. For inquiries, please contact [info@arexbio.com](mailto:info@arexbio.com) or your local distributor.

\*Clone Number, Reactivity, Source/Host and Clonality can be found in the product name and Key Features section above.

**DATASHEET****TIPARP Rabbit Polyclonal Antibody**

CAT. NO. APA17117

**DATA****STORAGE**

Store at 4°C short term. For long term storage, store at -20°C, avoiding freeze/thaw cycles.

**NOTE**

For Research Use Only. Not for diagnostic, therapeutics, prophylactic or in vivo use.