

## DATASHEET

# TIPIN Rabbit Polyclonal Antibody

CAT. NO. APA17118

### KEY FEATURES

Target	TIPIN	Source / Host	Rabbit
Reactivity	Human, Mouse, Rat	Clonality	Polyclonal
Applications	WB	Conjugation	Unconjugated
Form / Buffer	Liquid in 0.42% Potassium phosphate, 0.87% Sodium chloride, pH 7.3, 30% glycerol, and 0.01% sodium azide.		Storage at -20°C

### BACKGROUND

Plays an important role in the control of DNA replication and the maintenance of replication fork stability . Important for cell survival after DNA damage or replication stress . May be specifically required for the ATR-CHEK1 pathway in the replication checkpoint induced by hydroxyurea or ultraviolet light . Forms a complex with TIMELESS and this complex regulates DNA replication processes under both normal and stress conditions, stabilizes replication forks and influences both CHEK1 phosphorylation and the intra-S phase checkpoint in response to genotoxic stress .

### APPLICATION

To ensure optimal assay performance, AREX recommends conducting reagent titration tailored to each testing system for optimal detection results.

WB	1:500 - 1:2000
----	----------------

\*Results are sample-specific. Please refer to your local assay conditions and test parameters for reference.

### PRODUCT OVERVIEW

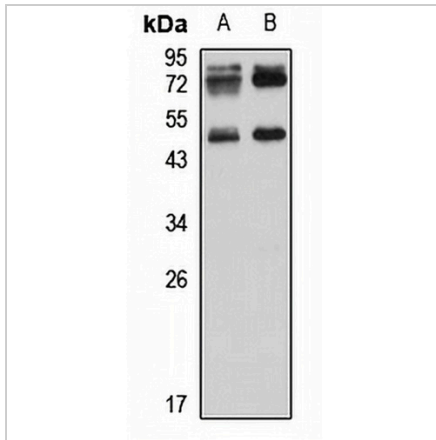
Description	Rabbit polyclonal antibody to TIPIN
Specificity	Recognizes endogenous levels of TIPIN protein
Antibody Type	Primary antibody
Immunogen	Recombinant fusion protein of human TIPIN. The exact sequence is proprietary.
Purification	The antibody was purified by immunogen affinity chromatography.
Molecular Weight	Predicted: 34 kD; Observed: 50 kD
Form/Buffer	Liquid in 0.42% Potassium phosphate, 0.87% Sodium chloride, pH 7.3, 30% glycerol, and 0.01% sodium azide.
Alternative Names	TIMELESS-interacting protein
Gene Symbol	TIPIN
Entrez Gene	54962(Human); 66131(Mouse); 363076(Rat)
SwissProt	Q9BVW5(Human); Q91WA1(Mouse); Q4QR88(Rat)

\*AREX continuously optimizes our products. Webpage content may not reflect the latest updates. For inquiries, please contact [info@arexbio.com](mailto:info@arexbio.com) or your local distributor.

\*Clone Number, Reactivity, Source/Host and Clonality can be found in the product name and Key Features section above.

**DATASHEET****TIPIN Rabbit Polyclonal Antibody**

CAT. NO. APA17118

**DATA**

Western blot analysis of TIPIN expression in HeLa (A), MCF7 (B) whole cell lysates.  
(Predicted band size: 34 kD; Observed band size: 50 kD)

**STORAGE**

Store at 4°C short term. For long term storage, store at -20°C, avoiding freeze/thaw cycles.

**NOTE**

For Research Use Only. Not for diagnostic, therapeutics, prophylactic or in vivo use.