

DATASHEET

HOX11 Rabbit Polyclonal Antibody

CAT. NO. APA17120

KEY FEATURES

Target	HOX11	Source / Host	Rabbit
Reactivity	Human, Mouse, Rat	Clonality	Polyclonal
Applications	WB	Conjugation	Unconjugated
Form / Buffer	Liquid in 0.42% Potassium phosphate, 0.87% Sodium chloride, pH 7.3, 30% glycerol, and 0.01% sodium azide.		Storage at -20°C

BACKGROUND

Controls the genesis of the spleen. Binds to the DNA sequence 5'-GGCGTAAGTGG-3'.

APPLICATION

To ensure optimal assay performance, AREX recommends conducting reagent titration tailored to each testing system for optimal detection results.

WB	1:500 - 1:2000
----	----------------

*Results are sample-specific. Please refer to your local assay conditions and test parameters for reference.

PRODUCT OVERVIEW

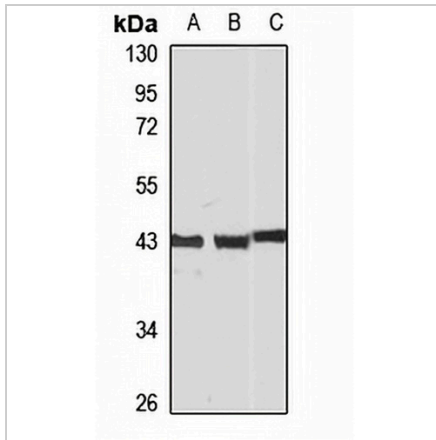
Description	Rabbit polyclonal antibody to HOX11
Specificity	Recognizes endogenous levels of HOX11 protein
Antibody Type	Primary antibody
Immunogen	Recombinant fusion protein of human HOX11. The exact sequence is proprietary.
Purification	The antibody was purified by immunogen affinity chromatography.
Molecular Weight	Predicted: 26; Observed: 40 kD
Form/Buffer	Liquid in 0.42% Potassium phosphate, 0.87% Sodium chloride, pH 7.3, 30% glycerol, and 0.01% sodium azide.
Alternative Names	HOX11; TCL3; T-cell leukemia homeobox protein 1; Homeobox protein Hox-11; Proto-oncogene TCL-3; T-cell leukemia/lymphoma protein 3
Gene Symbol	TLX1
Entrez Gene	3195(Human)
SwissProt	P31314(Human); P43345(Mouse)

*AREX continuously optimizes our products. Webpage content may not reflect the latest updates. For inquiries, please contact info@arexbio.com or your local distributor.

*Clone Number, Reactivity, Source/Host and Clonality can be found in the product name and Key Features section above.

DATASHEET**HOX11 Rabbit Polyclonal Antibody**

CAT. NO. APA17120

DATA

Western blot analysis of HOX11 expression in K562 (A), mouse spleen (B), rat spleen (C) whole cell lysates. (Predicted band size: 26; 34 kD; Observed band size: 40 kD)

STORAGE

Store at 4°C short term. For long term storage, store at -20°C, avoiding freeze/thaw cycles.

NOTE

For Research Use Only. Not for diagnostic, therapeutics, prophylactic or in vivo use.