

DATASHEET

TMEFF2 Rabbit Polyclonal Antibody

CAT. NO. APA17125

KEY FEATURES

Target	TMEFF2	Source / Host	Rabbit
Reactivity	Human, Mouse, Rat	Clonality	Polyclonal
Applications	WB	Conjugation	Unconjugated
Form / Buffer	Liquid in 0.42% Potassium phosphate, 0.87% Sodium chloride, pH 7.3, 30% glycerol, and 0.01% sodium azide.		Storage at-20°C

BACKGROUND

May be a survival factor for hippocampal and mesencephalic neurons. The shedded form up-regulates cancer cell proliferation, probably by promoting ERK1/2 phosphorylation.

APPLICATION

To ensure optimal assay performance, AREX recommends conducting reagent titration tailored to each testing system for optimal detection results.

WB	1:500 - 1:2000
----	----------------

*Results are sample-specific. Please refer to your local assay conditions and test parameters for reference.

PRODUCT OVERVIEW

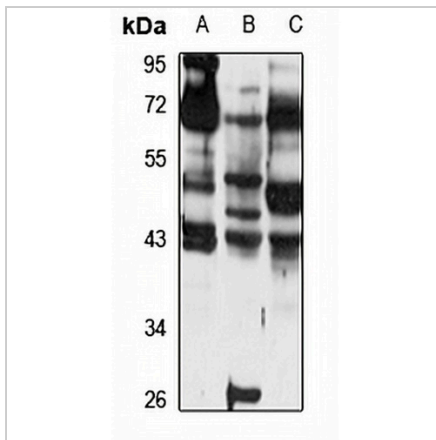
Description	Rabbit polyclonal antibody to TMEFF2
Specificity	Recognizes endogenous levels of TMEFF2 protein
Antibody Type	Primary antibody
Immunogen	Recombinant fusion protein of human TMEFF2. The exact sequence is proprietary.
Purification	The antibody was purified by immunogen affinity chromatography.
Molecular Weight	Predicted: 41 kD; Observed: 42 kD
Form/Buffer	Liquid in 0.42% Potassium phosphate, 0.87% Sodium chloride, pH 7.3, 30% glycerol, and 0.01% sodium azide.
Alternative Names	HPP1; TENB2; TPEF; Tomoregulin-2; TR-2; Hyperplastic polyposis protein 1; Transmembrane protein with EGF-like and two follistatin-like domains
Gene Symbol	TMEFF2
Entrez Gene	23671(Human); 56363(Mouse)
SwissProt	Q9UIK5(Human); Q9QYM9(Mouse)

*AREX continuously optimizes our products. Webpage content may not reflect the latest updates. For inquiries, please contact info@arexbio.com or your local distributor.

*Clone Number, Reactivity, Source/Host and Clonality can be found in the product name and Key Features section above.

DATASHEET**TMEFF2 Rabbit Polyclonal Antibody**

CAT. NO. APA17125

DATA

Western blot analysis of TMEFF2 expression in SW480 (A), mouse lung (B), rat brain (C) whole cell lysates. (Predicted band size: 41 kD; Observed band size: 42 kD)

STORAGE

Store at 4°C short term. For long term storage, store at -20°C, avoiding freeze/thaw cycles.

NOTE

For Research Use Only. Not for diagnostic, therapeutics, prophylactic or in vivo use.