

DATASHEET

TMEM147 Rabbit Polyclonal Antibody

CAT. NO. APA17129

KEY FEATURES

Target	TMEM147	Source / Host	Rabbit
Reactivity	Human, Mouse, Rat	Clonality	Polyclonal
Applications	WB	Conjugation	Unconjugated
Form / Buffer	Liquid in 0.42% Potassium phosphate, 0.87% Sodium chloride, pH 7.3, 30% glycerol, and 0.01% sodium azide.		Storage at -20°C

BACKGROUND

Component of the multi-pass translocon (MPT) complex that mediates insertion of multi-pass membrane proteins into the lipid bilayer of membranes complex that mediates insertion of multi-pass membrane proteins into the lipid bilayer of membranes . The MPT complex takes over after the SEC61 complex: following membrane insertion of the first few transmembrane segments of proteins by the SEC61 complex, the MPT complex occludes the lateral gate of the SEC61 complex to promote insertion of subsequent transmembrane regions . Also acts as a negative regulator of CHRM3 function, most likely by interfering with its trafficking to the cell membrane . Negatively regulates CHRM3-mediated calcium mobilization and activation of RPS6KA1/p90RSK activity .

APPLICATION

To ensure optimal assay performance, AREX recommends conducting reagent titration tailored to each testing system for optimal detection results.

WB	1:500 - 1:2000
----	----------------

*Results are sample-specific. Please refer to your local assay conditions and test parameters for reference.

PRODUCT OVERVIEW

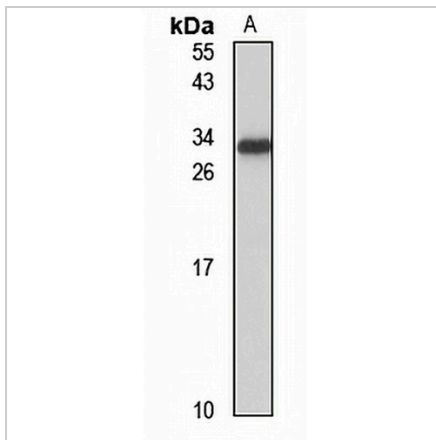
Description	Rabbit polyclonal antibody to TMEM147
Specificity	Recognizes endogenous levels of TMEM147 protein
Antibody Type	Primary antibody
Immunogen	KLH-conjugated synthetic peptide of human TMEM147. The exact sequence is proprietary.
Purification	The antibody was purified by immunogen affinity chromatography.
Molecular Weight	Predicted: 25 kD; Observed: 30 kD
Form/Buffer	Liquid in 0.42% Potassium phosphate, 0.87% Sodium chloride, pH 7.3, 30% glycerol, and 0.01% sodium azide.
Alternative Names	Transmembrane protein 147; Protein NIFIE 14
Gene Symbol	TMEM147
Entrez Gene	10430(Human); 69804(Mouse); 292792(Rat)
SwissProt	Q9BVK8(Human); Q9CQG6(Mouse); Q2TA63(Rat)

*AREX continuously optimizes our products. Webpage content may not reflect the latest updates. For inquiries, please contact info@arexbio.com or your local distributor.

*Clone Number, Reactivity, Source/Host and Clonality can be found in the product name and Key Features section above.

DATASHEET**TMEM147 Rabbit Polyclonal Antibody**

CAT. NO. APA17129

DATA

Western blot analysis of TMEM147 expression in mouse brain (A) whole cell lysates.
(Predicted band size: 25 kD; Observed band size: 30 kD)

STORAGE

Store at 4°C short term. For long term storage, store at -20°C, avoiding freeze/thaw cycles.

NOTE

For Research Use Only. Not for diagnostic, therapeutics, prophylactic or in vivo use.