

**DATASHEET**

**TMX1 Rabbit Polyclonal Antibody**

CAT. NO. APA17137

**KEY FEATURES**

Target	TMX1	Source / Host	Rabbit
Reactivity	Human, Mouse	Clonality	Polyclonal
Applications	WB, IHC	Conjugation	Unconjugated
Form / Buffer	Liquid in 0.42% Potassium phosphate, 0.87% Sodium chloride, pH 7.3, 30% glycerol, and 0.01% sodium azide.		Storage at -20°C

**BACKGROUND**

Thioredoxin domain-containing protein that participates in various redox reactions through the reversible oxidation of its active center dithiol to a disulfide and catalyze dithiol-disulfide exchange reactions . Acts as a key inhibitor of the alternative triglyceride biosynthesis pathway by inhibiting the activity of TMEM68/DIESL at the endoplasmic reticulum, thereby restricting accumulation of triacylglycerol . The alternative triglyceride biosynthesis pathway mediates formation of triacylglycerol from diacylglycerol and membrane phospholipids . Acts as a protein disulfide isomerase by catalyzing formation or reduction of disulfide bonds . Specifically mediates formation of disulfide bonds of transmembrane proteins at the endoplasmic reticulum membrane .

**APPLICATION**

To ensure optimal assay performance, AREX recommends conducting reagent titration tailored to each testing system for optimal detection results.

WB	1:500 - 1:2000
IHC	1:50 - 1:200

\*Results are sample-specific. Please refer to your local assay conditions and test parameters for reference.

**PRODUCT OVERVIEW**

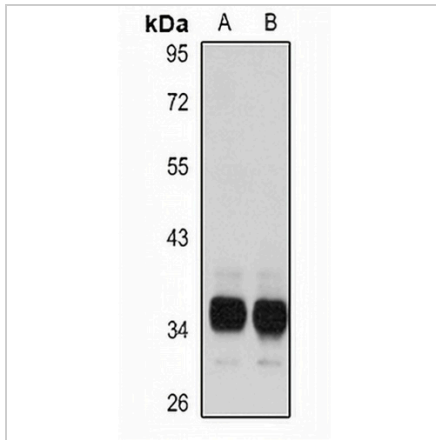
Description	Rabbit polyclonal antibody to TMX1
Specificity	Recognizes endogenous levels of TMX1 protein
Antibody Type	Primary antibody
Immunogen	Recombinant fusion protein of human TMX1. The exact sequence is proprietary.
Purification	The antibody was purified by immunogen affinity chromatography.
Molecular Weight	Predicted: 31 kD; Observed: 35 kD
Form/Buffer	Liquid in 0.42% Potassium phosphate, 0.87% Sodium chloride, pH 7.3, 30% glycerol, and 0.01% sodium azide.
Alternative Names	TMX; TXNDC; TXNDC1; Thioredoxin-related transmembrane protein 1; Thioredoxin domain-containing protein 1; Transmembrane Trx-related protein
Gene Symbol	TMX1
Entrez Gene	81542(Human); 72736(Mouse)
SwissProt	Q9H3N1(Human); Q8VBT0(Mouse)

\*AREX continuously optimizes our products. Webpage content may not reflect the latest updates. For inquiries, please contact [info@arexbio.com](mailto:info@arexbio.com) or your local distributor.

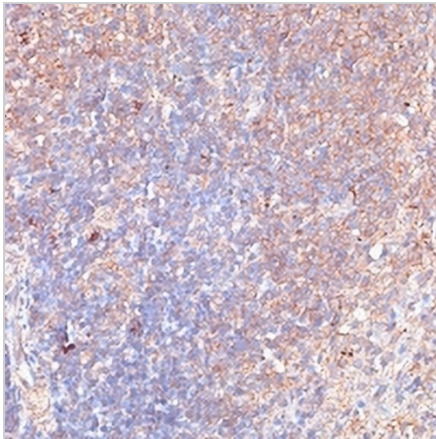
\*Clone Number, Reactivity, Source/Host and Clonality can be found in the product name and Key Features section above.

**DATASHEET****TMX1 Rabbit Polyclonal Antibody**

CAT. NO. APA17137

**DATA**

Western blot analysis of TMX1 expression in HeLa (A), LO2 (B) whole cell lysates.  
(Predicted band size: 31 kD; Observed band size: 35 kD)



Immunohistochemical analysis of TMX1 staining in mouse spleen formalin fixed paraffin embedded tissue section. The section was pre-treated using heat mediated antigen retrieval with sodium citrate buffer (pH 6.0). The section was then incubated with the antibody at room temperature and detected using an HRP conjugated compact polymer system. DAB was used as the chromogen. The section was then counterstained with haematoxylin and mounted with DPX.

**STORAGE**

Store at 4°C short term. For long term storage, store at -20°C, avoiding freeze/thaw cycles.

**NOTE**

For Research Use Only. Not for diagnostic, therapeutics, prophylactic or in vivo use.