

DATASHEET

TOM1 Rabbit Polyclonal Antibody

CAT. NO. APA17148

KEY FEATURES

Target	TOM1	Source / Host	Rabbit
Reactivity	Human, Mouse, Rat	Clonality	Polyclonal
Applications	WB, IHC	Conjugation	Unconjugated
Form / Buffer	Liquid in 0.42% Potassium phosphate, 0.87% Sodium chloride, pH 7.3, 30% glycerol, and 0.01% sodium azide.		Storage at -20°C

BACKGROUND

Adapter protein that plays a role in the intracellular membrane trafficking of ubiquitinated proteins, thereby participating in autophagy, ubiquitination-dependent signaling and receptor recycling pathways . Acts as a MYO6/Myosin VI adapter protein that targets MYO6 to endocytic structures . Together with MYO6, required for autophagosomal delivery of endocytic cargo, the maturation of autophagosomes and their fusion with lysosomes . MYO6 links TOM1 with autophagy receptors, such as TAX1BP1; CALCOCO2/NDP52 and OPTN . Binds to polyubiquitinated proteins via its GAT domain . In a complex with TOLLIP, recruits ubiquitin-conjugated proteins onto early endosomes . The Tom1-Tollip complex may regulate endosomal trafficking by linking polyubiquitinated proteins to clathrin .

APPLICATION

To ensure optimal assay performance, AREX recommends conducting reagent titration tailored to each testing system for optimal detection results.

WB	1:500 - 1:1000
IHC	1:50 - 1:200

*Results are sample-specific. Please refer to your local assay conditions and test parameters for reference.

PRODUCT OVERVIEW

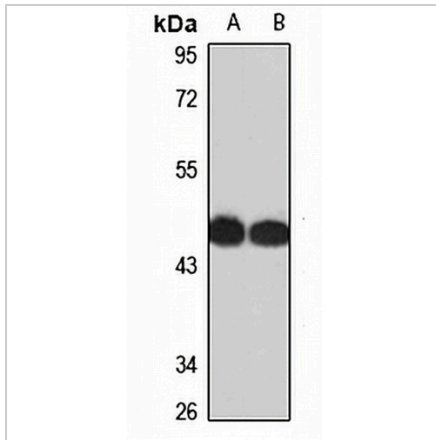
Description	Rabbit polyclonal antibody to TOM1
Specificity	Recognizes endogenous levels of TOM1 protein
Antibody Type	Primary antibody
Immunogen	Recombinant fusion protein of human TOM1. The exact sequence is proprietary.
Purification	The antibody was purified by immunogen affinity chromatography.
Molecular Weight	Predicted: 48; Observed: 54 kD
Form/Buffer	Liquid in 0.42% Potassium phosphate, 0.87% Sodium chloride, pH 7.3, 30% glycerol, and 0.01% sodium azide.
Alternative Names	Target of Myb protein 1
Gene Symbol	TOM1
Entrez Gene	10043(Human); 21968(Mouse)
SwissProt	O60784(Human); O88746(Mouse)

*AREX continuously optimizes our products. Webpage content may not reflect the latest updates. For inquiries, please contact info@arexbio.com or your local distributor.

*Clone Number, Reactivity, Source/Host and Clonality can be found in the product name and Key Features section above.

DATASHEET**TOM1 Rabbit Polyclonal Antibody**

CAT. NO. APA17148

DATA

Western blot analysis of TOM1 expression in mouse kidney (A), rat liver (B) whole cell lysates. (Predicted band size: 48; 50; 53 kD; Observed band size: 54 kD)

STORAGE

Store at 4°C short term. For long term storage, store at -20°C, avoiding freeze/thaw cycles.

NOTE

For Research Use Only. Not for diagnostic, therapeutics, prophylactic or in vivo use.