

## DATASHEET

# TOM40 Rabbit Polyclonal Antibody

CAT. NO. APA17151

### KEY FEATURES

Target	TOM40	Source / Host	Rabbit
Reactivity	Human, Mouse, Rat	Clonality	Polyclonal
Applications	WB, IF/ICC	Conjugation	Unconjugated
Form / Buffer	Liquid in 0.42% Potassium phosphate, 0.87% Sodium chloride, pH 7.3, 30% glycerol, and 0.01% sodium azide.		Storage at -20°C

### BACKGROUND

Channel-forming protein that forms part of the translocase of the outer mitochondrial membrane (TOM) complex essential for the recognition and translocation of cytosolically synthesized mitochondrial preproteins complex essential for the recognition and translocation of cytosolically synthesized mitochondrial preproteins. The TOM complex associates with the ion channel VDAC2 and PINK1 kinase at depolarized mitochondria, this interaction stabilizes PINK1 at the outer mitochondrial membrane and triggers downstream mitophagy by the recruitment of the E3 ubiquitin ligase PRKN.

### APPLICATION

To ensure optimal assay performance, AREX recommends conducting reagent titration tailored to each testing system for optimal detection results.

WB	1:500 - 1:2000
IF/ICC	1:50 - 1:200

\*Results are sample-specific. Please refer to your local assay conditions and test parameters for reference.

### PRODUCT OVERVIEW

Description	Rabbit polyclonal antibody to TOM40
Specificity	Recognizes endogenous levels of TOM40 protein
Antibody Type	Primary antibody
Immunogen	Recombinant fusion protein of human TOM40. The exact sequence is proprietary.
Purification	The antibody was purified by immunogen affinity chromatography.
Molecular Weight	Predicted: 34; Observed: 38 kD
Form/Buffer	Liquid in 0.42% Potassium phosphate, 0.87% Sodium chloride, pH 7.3, 30% glycerol, and 0.01% sodium azide.
Alternative Names	C19orf1; PEREC1; TOM40; Mitochondrial import receptor subunit TOM40 homolog; Protein Haymaker; Translocase of outer membrane 40 kDa subunit homolog; p38.5
Gene Symbol	TOMM40
Entrez Gene	10452(Human); 53333(Mouse); 308416(Rat)
SwissProt	O96008(Human); Q9QYA2(Mouse); Q75Q40(Rat)

\*AREX continuously optimizes our products. Webpage content may not reflect the latest updates. For inquiries, please contact [info@arexbio.com](mailto:info@arexbio.com) or your local distributor.

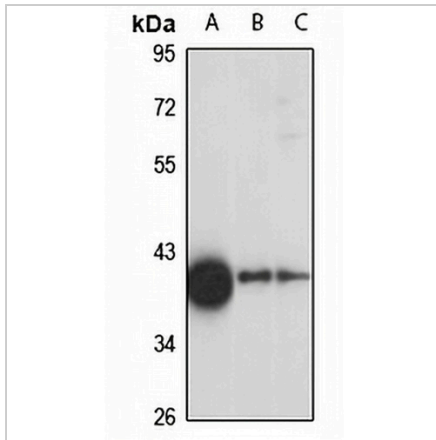
\*Clone Number, Reactivity, Source/Host and Clonality can be found in the product name and Key Features section above.

**DATASHEET**

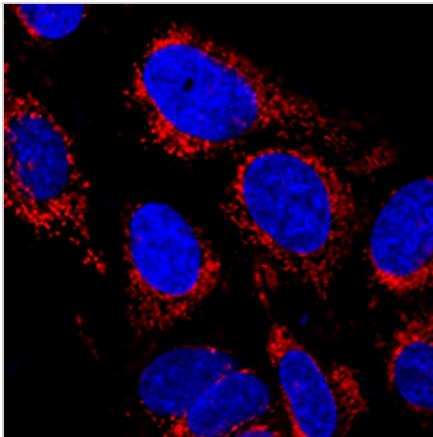
**TOM40 Rabbit Polyclonal Antibody**

CAT. NO. APA17151

**DATA**



Western blot analysis of TOM40 expression in HepG2 (A), mouse testis (B), rat brain (C) whole cell lysates. (Predicted band size: 34; 37 kD; Observed band size: 38 kD)



Immunofluorescent analysis of TOM40 staining in U2OS cells. Formalin-fixed cells were permeabilized with 0.1% Triton X-100 in TBS for 5-10 minutes and blocked with 3% BSA-PBS for 30 minutes at room temperature. Cells were probed with the primary antibody in 3% BSA-PBS and incubated overnight at 4 °C in a humidified chamber. Cells were washed with PBST and incubated with a AREX® Fluor 594-conjugated secondary antibody (red) in PBS at room temperature in the dark. DAPI was used to stain the cell nuclei (blue).

**STORAGE**

Store at 4°C short term. For long term storage, store at -20°C, avoiding freeze/thaw cycles.

**NOTE**

For Research Use Only. Not for diagnostic, therapeutics, prophylactic or in vivo use.