

DATASHEET

GCX-1 Rabbit Polyclonal Antibody

CAT. NO. APA17153

KEY FEATURES

Target	GCX-1	Source / Host	Rabbit
Reactivity	Human, Rat	Clonality	Polyclonal
Applications	WB	Conjugation	Unconjugated
Form / Buffer	Liquid in 0.42% Potassium phosphate, 0.87% Sodium chloride, pH 7.3, 30% glycerol, and 0.01% sodium azide.		Storage at -20°C

BACKGROUND

Putative transcriptional activator involved in the hypothalamo-pituitary-gonadal system.

APPLICATION

To ensure optimal assay performance, AREX recommends conducting reagent titration tailored to each testing system for optimal detection results.

WB	1:500 - 1:2000
----	----------------

*Results are sample-specific. Please refer to your local assay conditions and test parameters for reference.

PRODUCT OVERVIEW

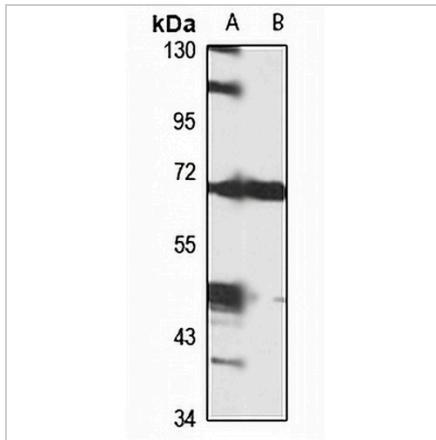
Description	Rabbit polyclonal antibody to GCX-1
Specificity	Recognizes endogenous levels of GCX-1 protein
Antibody Type	Primary antibody
Immunogen	Recombinant fusion protein of human GCX-1. The exact sequence is proprietary.
Purification	The antibody was purified by immunogen affinity chromatography.
Molecular Weight	Predicted: 51 kD; Observed: 70 kD
Form/Buffer	Liquid in 0.42% Potassium phosphate, 0.87% Sodium chloride, pH 7.3, 30% glycerol, and 0.01% sodium azide.
Alternative Names	C20orf100; GCX1; TOX high mobility group box family member 2; Granulosa cell HMG box protein 1; GCX-1
Gene Symbol	TOX2
Entrez Gene	84969(Human); 311615(Rat)
SwissProt	Q96NM4(Human); Q76IQ7(Rat)

*AREX continuously optimizes our products. Webpage content may not reflect the latest updates. For inquiries, please contact info@arexbio.com or your local distributor.

*Clone Number, Reactivity, Source/Host and Clonality can be found in the product name and Key Features section above.

DATASHEET**GCX-1 Rabbit Polyclonal Antibody**

CAT. NO. APA17153

DATA

Western blot analysis of GCX-1 expression in U251MG (A), rat lung (B) whole cell lysates.
(Predicted band size: 51 kD; Observed band size: 70 kD)

STORAGE

Store at 4°C short term. For long term storage, store at -20°C, avoiding freeze/thaw cycles.

NOTE

For Research Use Only. Not for diagnostic, therapeutics, prophylactic or in vivo use.