

DATASHEET

TRAF7 Rabbit Polyclonal Antibody

CAT. NO. APA17160

KEY FEATURES

Target	TRAF7	Source / Host	Rabbit
Reactivity	Human, Mouse	Clonality	Polyclonal
Applications	WB	Conjugation	Unconjugated
Form / Buffer	Liquid in 0.42% Potassium phosphate, 0.87% Sodium chloride, pH 7.3, 30% glycerol, and 0.01% sodium azide.		Storage at -20°C

BACKGROUND

E3 ubiquitin and SUMO-protein ligase that plays a role in different biological processes such as innate immunity, inflammation or apoptosis . Potentiates MAP3K3-mediated activation of JUN/AP1 and DDIT3 transcriptional regulators . Negatively regulates MYB transcriptional activity by sequestering it to the cytosol via SUMOylation . Plays a role in the phosphorylation of MAPK1 and/or MAPK3, probably via its interaction with MAP3K3. Negatively regulates RLR-mediated innate immunity by promoting 'Lys-48'-linked ubiquitination of TBK1 through its RING domain to inhibit the cellular antiviral response .

APPLICATION

To ensure optimal assay performance, AREX recommends conducting reagent titration tailored to each testing system for optimal detection results.

WB	1:500 - 1:2000
----	----------------

*Results are sample-specific. Please refer to your local assay conditions and test parameters for reference.

PRODUCT OVERVIEW

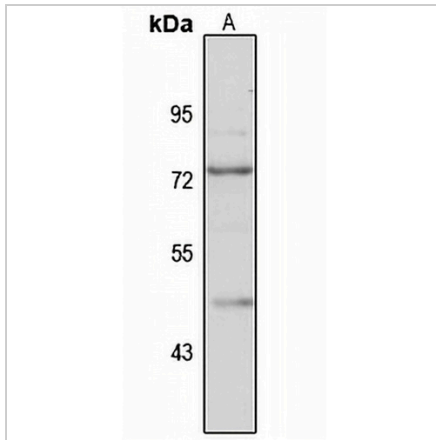
Description	Rabbit polyclonal antibody to TRAF7
Specificity	Recognizes endogenous levels of TRAF7 protein
Antibody Type	Primary antibody
Immunogen	Recombinant fusion protein of human TRAF7. The exact sequence is proprietary.
Purification	The antibody was purified by immunogen affinity chromatography.
Molecular Weight	Predicted: 66; Observed: 75 kD
Form/Buffer	Liquid in 0.42% Potassium phosphate, 0.87% Sodium chloride, pH 7.3, 30% glycerol, and 0.01% sodium azide.
Alternative Names	RFWD1; RNF119; E3 ubiquitin-protein ligase TRAF7; RING finger and WD repeat-containing protein 1; RING finger protein 119; TNF receptor-associated factor 7
Gene Symbol	TRAF7
Entrez Gene	84231(Human)
SwissProt	Q6Q0C0(Human); Q922B6(Mouse)

*AREX continuously optimizes our products. Webpage content may not reflect the latest updates. For inquiries, please contact info@arexbio.com or your local distributor.

*Clone Number, Reactivity, Source/Host and Clonality can be found in the product name and Key Features section above.

DATASHEET**TRAF7 Rabbit Polyclonal Antibody**

CAT. NO. APA17160

DATA

Western blot analysis of TRAF7 expression in HeLa (A) whole cell lysates. (Predicted band size: 66; 74 kD; Observed band size: 75 kD)

STORAGE

Store at 4°C short term. For long term storage, store at -20°C, avoiding freeze/thaw cycles.

NOTE

For Research Use Only. Not for diagnostic, therapeutics, prophylactic or in vivo use.