

DATASHEET

TRAM1 Rabbit Polyclonal Antibody

CAT. NO. APA17163

KEY FEATURES

Target	TRAM1	Source / Host	Rabbit
Reactivity	Human, Mouse	Clonality	Polyclonal
Applications	WB	Conjugation	Unconjugated
Form / Buffer	Liquid in 0.42% Potassium phosphate, 0.87% Sodium chloride, pH 7.3, 30% glycerol, and 0.01% sodium azide.		Storage at -20°C

BACKGROUND

Involved in the translocation of nascent protein chains into or through the endoplasmic reticulum (ER) membrane by facilitating the proper chain positioning at the SEC61 channel membrane by facilitating the proper chain positioning at the SEC61 channel . Regulates the exposure of nascent secretory protein chain to the cytosol during translocation into the ER . May affect the phospholipid bilayer in the vicinity of the lateral gate of the SEC61 channel, thereby facilitating ER protein transport . Intimately associates with transmembrane (TM) domain of nascent membrane proteins during the entire integration process into the ER membrane .

APPLICATION

To ensure optimal assay performance, AREX recommends conducting reagent titration tailored to each testing system for optimal detection results.

WB	1:500 - 1:2000
----	----------------

*Results are sample-specific. Please refer to your local assay conditions and test parameters for reference.

PRODUCT OVERVIEW

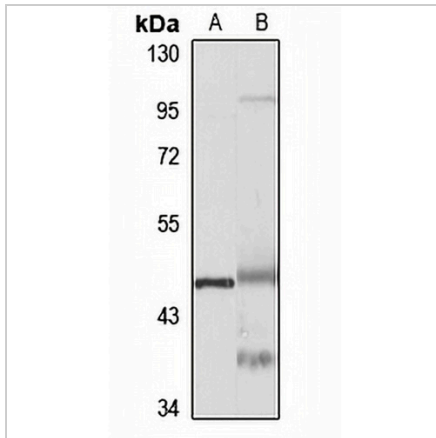
Description	Rabbit polyclonal antibody to TRAM1
Specificity	Recognizes endogenous levels of TRAM1 protein
Antibody Type	Primary antibody
Immunogen	Recombinant fusion protein of human TRAM1. The exact sequence is proprietary.
Purification	The antibody was purified by immunogen affinity chromatography.
Molecular Weight	Predicted: 39; Observed: 45 kD
Form/Buffer	Liquid in 0.42% Potassium phosphate, 0.87% Sodium chloride, pH 7.3, 30% glycerol, and 0.01% sodium azide.
Alternative Names	TRAM; Translocating chain-associated membrane protein 1
Gene Symbol	TRAM1
Entrez Gene	23471(Human); 72265(Mouse)
SwissProt	Q15629(Human); Q91V04(Mouse)

*AREX continuously optimizes our products. Webpage content may not reflect the latest updates. For inquiries, please contact info@arexbio.com or your local distributor.

*Clone Number, Reactivity, Source/Host and Clonality can be found in the product name and Key Features section above.

DATASHEET**TRAM1 Rabbit Polyclonal Antibody**

CAT. NO. APA17163

DATA

Western blot analysis of TRAM1 expression in U251MG (A), mouse liver (B) whole cell lysates. (Predicted band size: 39; 43 kD; Observed band size: 45 kD)

STORAGE

Store at 4°C short term. For long term storage, store at -20°C, avoiding freeze/thaw cycles.

NOTE

For Research Use Only. Not for diagnostic, therapeutics, prophylactic or in vivo use.