

DATASHEET

TRAPPC10 Rabbit Polyclonal Antibody

CAT. NO. APA17164

KEY FEATURES

Target	TRAPPC10	Source / Host	Rabbit
Reactivity	Human, Mouse, Rat	Clonality	Polyclonal
Applications	WB	Conjugation	Unconjugated
Form / Buffer	Liquid in 0.42% Potassium phosphate, 0.87% Sodium chloride, pH 7.3, 30% glycerol, and 0.01% sodium azide.		Storage at -20°C

BACKGROUND

Specific subunit of the TRAPP (transport protein particle) II complex, a highly conserved vesicle tethering complex that functions in late Golgi trafficking as a membrane tether.

APPLICATION

To ensure optimal assay performance, AREX recommends conducting reagent titration tailored to each testing system for optimal detection results.

WB	1:500 - 1:1000
----	----------------

*Results are sample-specific. Please refer to your local assay conditions and test parameters for reference.

PRODUCT OVERVIEW

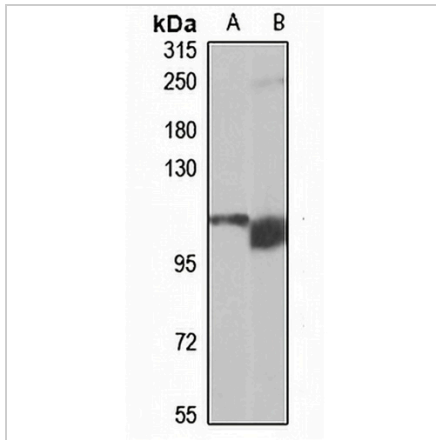
Description	Rabbit polyclonal antibody to TRAPPC10
Specificity	Recognizes endogenous levels of TRAPPC10 protein
Antibody Type	Primary antibody
Immunogen	Recombinant fusion protein of human TRAPPC10. The exact sequence is proprietary.
Purification	The antibody was purified by immunogen affinity chromatography.
Molecular Weight	Predicted: 32; Observed: 112 kD
Form/Buffer	Liquid in 0.42% Potassium phosphate, 0.87% Sodium chloride, pH 7.3, 30% glycerol, and 0.01% sodium azide.
Alternative Names	EHOC1; TMEM1; Trafficking protein particle complex subunit 10; Epilepsy holoprosencephaly candidate 1 protein; EHOC-1; Protein GT334; Trafficking protein particle complex subunit TMEM1; Transport protein particle subunit TMEM1; TRAPP subunit TMEM1
Gene Symbol	TRAPPC10
Entrez Gene	7109(Human)
SwissProt	P48553(Human); Q3TLI0(Mouse)

*AREX continuously optimizes our products. Webpage content may not reflect the latest updates. For inquiries, please contact info@arexbio.com or your local distributor.

*Clone Number, Reactivity, Source/Host and Clonality can be found in the product name and Key Features section above.

DATASHEET**TRAPPC10 Rabbit Polyclonal Antibody**

CAT. NO. APA17164

DATA**STORAGE**

Store at 4°C short term. For long term storage, store at -20°C, avoiding freeze/thaw cycles.

NOTE

For Research Use Only. Not for diagnostic, therapeutics, prophylactic or in vivo use.