

**DATASHEET**

**TRH Rabbit Polyclonal Antibody**

CAT. NO. APA17168

**KEY FEATURES**

Target	TRH	Source / Host	Rabbit
Reactivity	Human, Mouse, Rat	Clonality	Polyclonal
Applications	WB	Conjugation	Unconjugated
Form / Buffer	Liquid in 0.42% Potassium phosphate, 0.87% Sodium chloride, pH 7.3, 30% glycerol, and 0.01% sodium azide.		Storage at -20°C

**BACKGROUND**

As a component of the hypothalamic-pituitary-thyroid axis, it controls the secretion of thyroid-stimulating hormone (TSH) and is involved in thyroid hormone synthesis regulation. It also operates as modulator of hair growth. It promotes hair-shaft elongation, prolongs the hair cycle growth phase (anagen) and antagonizes its termination (catagen) by TGFβ2. It stimulates proliferation and inhibits apoptosis of hair matrix keratinocytes.

**APPLICATION**

To ensure optimal assay performance, AREX recommends conducting reagent titration tailored to each testing system for optimal detection results.

WB	1:500 - 1:1000
----	----------------

\*Results are sample-specific. Please refer to your local assay conditions and test parameters for reference.

**PRODUCT OVERVIEW**

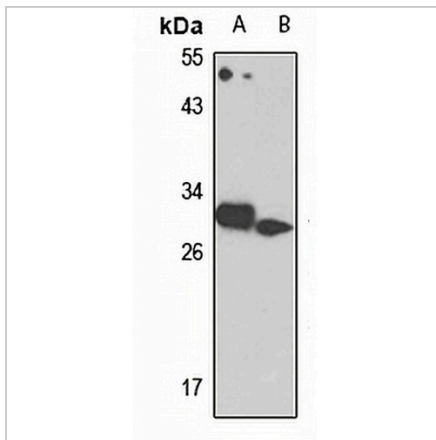
Description	Rabbit polyclonal antibody to TRH
Specificity	Recognizes endogenous levels of TRH protein
Antibody Type	Primary antibody
Immunogen	Recombinant fusion protein of human TRH. The exact sequence is proprietary.
Purification	The antibody was purified by immunogen affinity chromatography.
Molecular Weight	Predicted: 27 kD; Observed: 27 kD
Form/Buffer	Liquid in 0.42% Potassium phosphate, 0.87% Sodium chloride, pH 7.3, 30% glycerol, and 0.01% sodium azide.
Alternative Names	Pro-thyrotropin-releasing hormone; Pro-TRH; Prothyroliberin
Gene Symbol	TRH
Entrez Gene	7200(Human); 22044(Mouse); 25569(Rat)
SwissProt	P20396(Human); Q62361(Mouse); P01150(Rat)

\*AREX continuously optimizes our products. Webpage content may not reflect the latest updates. For inquiries, please contact [info@arexbio.com](mailto:info@arexbio.com) or your local distributor.

\*Clone Number, Reactivity, Source/Host and Clonality can be found in the product name and Key Features section above.

**DATASHEET****TRH Rabbit Polyclonal Antibody**

CAT. NO. APA17168

**DATA**

Western blot analysis of TRH expression in SHSY5Y (A), mouse brain (B) whole cell lysates. (Predicted band size: 27 kD; Observed band size: 27 kD)

**STORAGE**

Store at 4°C short term. For long term storage, store at -20°C, avoiding freeze/thaw cycles.

**NOTE**

For Research Use Only. Not for diagnostic, therapeutics, prophylactic or in vivo use.