

**DATASHEET**

**TRH-DE Rabbit Polyclonal Antibody**

CAT. NO. APA17169

**KEY FEATURES**

Target	TRH-DE	Source / Host	Rabbit
Reactivity	Human	Clonality	Polyclonal
Applications	WB	Conjugation	Unconjugated
Form / Buffer	Liquid in 0.42% Potassium phosphate, 0.87% Sodium chloride, pH 7.3, 30% glycerol, and 0.01% sodium azide.		Storage at-20°C

**BACKGROUND**

Specific inactivation of TRH after its release.

**APPLICATION**

To ensure optimal assay performance, AREX recommends conducting reagent titration tailored to each testing system for optimal detection results.

WB	1:500 - 1:2000
----	----------------

\*Results are sample-specific. Please refer to your local assay conditions and test parameters for reference.

**PRODUCT OVERVIEW**

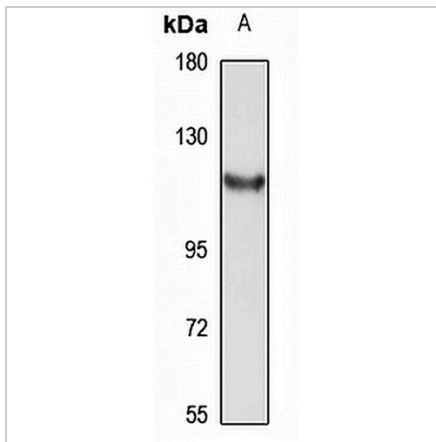
Description	Rabbit polyclonal antibody to TRH-DE
Specificity	Recognizes endogenous levels of TRH-DE protein
Antibody Type	Primary antibody
Immunogen	Recombinant fusion protein of human TRH-DE. The exact sequence is proprietary.
Purification	The antibody was purified by immunogen affinity chromatography.
Molecular Weight	Predicted: 117 kD; Observed: 117 kD
Form/Buffer	Liquid in 0.42% Potassium phosphate, 0.87% Sodium chloride, pH 7.3, 30% glycerol, and 0.01% sodium azide.
Alternative Names	Thyrotropin-releasing hormone-degrading ectoenzyme; TRH-DE; TRH-degrading ectoenzyme; Pyroglutamyl-peptidase II; PAP-II; TRH-specific aminopeptidase; Thyroliberinase
Gene Symbol	TRHDE
Entrez Gene	29953(Human)
SwissProt	Q9UKU6(Human)

\*AREX continuously optimizes our products. Webpage content may not reflect the latest updates. For inquiries, please contact [info@arexbio.com](mailto:info@arexbio.com) or your local distributor.

\*Clone Number, Reactivity, Source/Host and Clonality can be found in the product name and Key Features section above.

**DATASHEET****TRH-DE Rabbit Polyclonal Antibody**

CAT. NO. APA17169

**DATA**

Western blot analysis of TRH-DE expression in 22Rv1 (A) whole cell lysates. (Predicted band size: 117 kD; Observed band size: 117 kD)

**STORAGE**

Store at 4°C short term. For long term storage, store at -20°C, avoiding freeze/thaw cycles.

**NOTE**

For Research Use Only. Not for diagnostic, therapeutics, prophylactic or in vivo use.