

DATASHEET

TRIM15 Rabbit Polyclonal Antibody

CAT. NO. APA17172

KEY FEATURES

Target	TRIM15	Source / Host	Rabbit
Reactivity	Human	Clonality	Polyclonal
Applications	WB	Conjugation	Unconjugated
Form / Buffer	Liquid in 0.42% Potassium phosphate, 0.87% Sodium chloride, pH 7.3, 30% glycerol, and 0.01% sodium azide.		Storage at-20°C

BACKGROUND

E3 ubiquitin ligase that plays a role in several processes including innate antiviral immunity, cell migration and chemotaxis. Acts as a 'Lys-63'-specific ubiquitin ligase for MAPK1/ERK2 and MAPK3/ERK1, promoting their activation by facilitating their interaction with MAP2K1 and MAP2K2. Also plays a role in cell migration and chemotaxis by acting as a stable focal adhesion component upon recruitment by multi-adaptor protein paxillin/PXN. Functions in the RIGI-mediated interferon induction pathway upstream or at the level of MAVS. Inhibits NF-kappa-B activation by turnover of 'Lys-63'-linked ubiquitination of MAP3K7/TAK1. Mechanistically, prevents TRIM8 cytoplasmic translocation and thus inhibits TRIM8-mediated 'Lys-63'-linked polyubiquitination of MAP3K7/TAK1 in the cytoplasm.

APPLICATION

To ensure optimal assay performance, AREX recommends conducting reagent titration tailored to each testing system for optimal detection results.

WB	1:500 - 1:1000
----	----------------

*Results are sample-specific. Please refer to your local assay conditions and test parameters for reference.

PRODUCT OVERVIEW

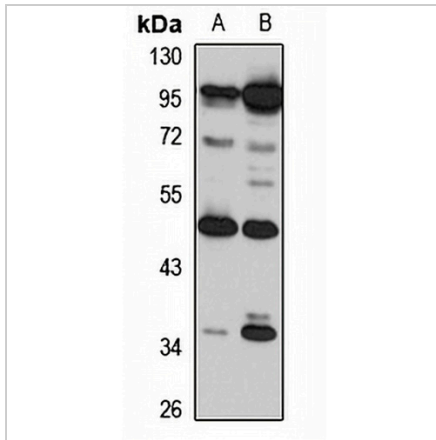
Description	Rabbit polyclonal antibody to TRIM15
Specificity	Recognizes endogenous levels of TRIM15 protein
Antibody Type	Primary antibody
Immunogen	Recombinant fusion protein of human TRIM15. The exact sequence is proprietary.
Purification	The antibody was purified by immunogen affinity chromatography.
Molecular Weight	Predicted: 12; Observed: 52 kD
Form/Buffer	Liquid in 0.42% Potassium phosphate, 0.87% Sodium chloride, pH 7.3, 30% glycerol, and 0.01% sodium azide.
Alternative Names	RNF93; ZNF178; ZNFB7; Tripartite motif-containing protein 15; RING finger protein 93; Zinc finger protein 178; Zinc finger protein B7
Gene Symbol	TRIM15
Entrez Gene	89870(Human)
SwissProt	Q9C019(Human)

*AREX continuously optimizes our products. Webpage content may not reflect the latest updates. For inquiries, please contact info@arexbio.com or your local distributor.

*Clone Number, Reactivity, Source/Host and Clonality can be found in the product name and Key Features section above.

DATASHEET**TRIM15 Rabbit Polyclonal Antibody**

CAT. NO. APA17172

DATA

Western blot analysis of TRIM15 expression in HT29 (A), HEK293T (B) whole cell lysates.
(Predicted band size: 12; 52 kD; Observed band size: 52 kD)

STORAGE

Store at 4°C short term. For long term storage, store at -20°C, avoiding freeze/thaw cycles.

NOTE

For Research Use Only. Not for diagnostic, therapeutics, prophylactic or in vivo use.