

DATASHEET

TRIM39 Rabbit Polyclonal Antibody

CAT. NO. APA17180

KEY FEATURES

Target	TRIM39	Source / Host	Rabbit
Reactivity	Human	Clonality	Polyclonal
Applications	WB	Conjugation	Unconjugated
Form / Buffer	Liquid in 0.42% Potassium phosphate, 0.87% Sodium chloride, pH 7.3, 30% glycerol, and 0.01% sodium azide.		Storage at -20°C

BACKGROUND

E3 ubiquitin-protein ligase . May facilitate apoptosis by inhibiting APC/C-Cdh1-mediated poly-ubiquitination and subsequent proteasome-mediated degradation of the pro-apoptotic protein MOAP1 . Regulates the G1/S transition of the cell cycle and DNA damage-induced G2 arrest by stabilizing CDKN1A/p21 . Positively regulates CDKN1A/p21 stability by competing with DTL for CDKN1A/p21 binding, therefore disrupting DCX(DTL) E3 ubiquitin ligase complex-mediated CDKN1A/p21 ubiquitination and degradation .

APPLICATION

To ensure optimal assay performance, AREX recommends conducting reagent titration tailored to each testing system for optimal detection results.

WB	1:500 - 1:2000
----	----------------

*Results are sample-specific. Please refer to your local assay conditions and test parameters for reference.

PRODUCT OVERVIEW

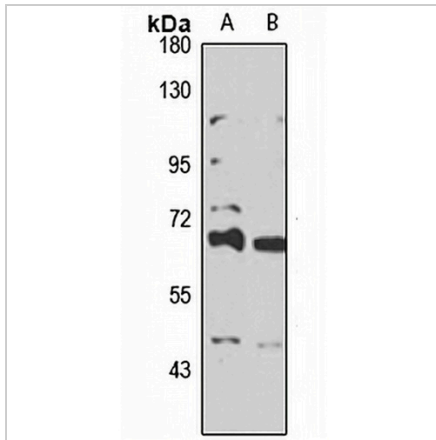
Description	Rabbit polyclonal antibody to TRIM39
Specificity	Recognizes endogenous levels of TRIM39 protein
Antibody Type	Primary antibody
Immunogen	KLH-conjugated synthetic peptide of human TRIM39. The exact sequence is proprietary.
Purification	The antibody was purified by immunogen affinity chromatography.
Molecular Weight	Predicted: 56; Observed: 59 kD
Form/Buffer	Liquid in 0.42% Potassium phosphate, 0.87% Sodium chloride, pH 7.3, 30% glycerol, and 0.01% sodium azide.
Alternative Names	RNF23; TFP; E3 ubiquitin-protein ligase TRIM39; RING finger protein 23; Testis-abundant finger protein; Tripartite motif-containing protein 39
Gene Symbol	TRIM39
Entrez Gene	56658(Human)
SwissProt	Q9HCM9(Human)

*AREX continuously optimizes our products. Webpage content may not reflect the latest updates. For inquiries, please contact info@arexbio.com or your local distributor.

*Clone Number, Reactivity, Source/Host and Clonality can be found in the product name and Key Features section above.

DATASHEET**TRIM39 Rabbit Polyclonal Antibody**

CAT. NO. APA17180

DATA**STORAGE**

Store at 4°C short term. For long term storage, store at -20°C, avoiding freeze/thaw cycles.

NOTE

For Research Use Only. Not for diagnostic, therapeutics, prophylactic or in vivo use.