

DATASHEET

SECp43 Rabbit Polyclonal Antibody

CAT. NO. APA17193

KEY FEATURES

Target	SECp43	Source / Host	Rabbit
Reactivity	Human, Mouse, Rat	Clonality	Polyclonal
Applications	WB	Conjugation	Unconjugated
Form / Buffer	Liquid in 0.42% Potassium phosphate, 0.87% Sodium chloride, pH 7.3, 30% glycerol, and 0.01% sodium azide.		Storage at -20°C

BACKGROUND

Involved in the early steps of selenocysteine biosynthesis and tRNA(Sec) charging to the later steps resulting in the cotranslational incorporation of selenocysteine into selenoproteins charging to the later steps resulting in the cotranslational incorporation of selenocysteine into selenoproteins . Stabilizes the SECISBP2, EEFSEC and tRNA(Sec) complex . May be involved in the methylation of tRNA(Sec) . Enhances efficiency of selenoproteins synthesis .

APPLICATION

To ensure optimal assay performance, AREX recommends conducting reagent titration tailored to each testing system for optimal detection results.

WB	1:500 - 1:2000
----	----------------

*Results are sample-specific. Please refer to your local assay conditions and test parameters for reference.

PRODUCT OVERVIEW

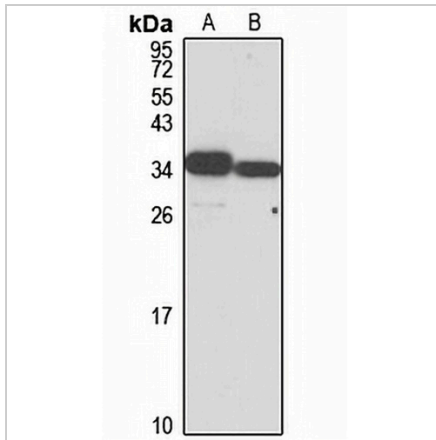
Description	Rabbit polyclonal antibody to SECp43
Specificity	Recognizes endogenous levels of SECp43 protein
Antibody Type	Primary antibody
Immunogen	Recombinant fusion protein of human SECp43. The exact sequence is proprietary.
Purification	The antibody was purified by immunogen affinity chromatography.
Molecular Weight	Predicted: 20; Observed: 36 kD
Form/Buffer	Liquid in 0.42% Potassium phosphate, 0.87% Sodium chloride, pH 7.3, 30% glycerol, and 0.01% sodium azide.
Alternative Names	SECP43; TRSPAP1; tRNA selenocysteine 1-associated protein 1; SECp43; tRNA selenocysteine-associated protein 1
Gene Symbol	TRNAU1AP
Entrez Gene	54952(Human); 71787(Mouse); 65241(Rat)
SwissProt	Q9NX07(Human); Q80VC6(Mouse); Q9QZI7(Rat)

*AREX continuously optimizes our products. Webpage content may not reflect the latest updates. For inquiries, please contact info@arexbio.com or your local distributor.

*Clone Number, Reactivity, Source/Host and Clonality can be found in the product name and Key Features section above.

DATASHEET**SECp43 Rabbit Polyclonal Antibody**

CAT. NO. APA17193

DATA

Western blot analysis of SECp43 expression in A549 (A), mouse lung (B) whole cell lysates. (Predicted band size: 20; 32 kD; Observed band size: 36 kD)

STORAGE

Store at 4°C short term. For long term storage, store at -20°C, avoiding freeze/thaw cycles.

NOTE

For Research Use Only. Not for diagnostic, therapeutics, prophylactic or in vivo use.