

DATASHEET

TRPM4 Rabbit Polyclonal Antibody

CAT. NO. APA17195

KEY FEATURES

Target	TRPM4	Source / Host	Rabbit
Reactivity	Human, Mouse, Rat	Clonality	Polyclonal
Applications	WB, IHC	Conjugation	Unconjugated
Form / Buffer	Liquid in 0.42% Potassium phosphate, 0.87% Sodium chloride, pH 7.3, 30% glycerol, and 0.01% sodium azide.		Storage at -20°C

BACKGROUND

Calcium-activated selective cation channel that mediates membrane depolarization. While it is activated by increase in intracellular Ca(2+), it is impermeable to it. Mediates transport of monovalent cations (Na(+) > K(+) > Cs(+) > Li(+)), leading to depolarize the membrane. It thereby plays a central role in cardiomyocytes, neurons from entorhinal cortex, dorsal root and vomeronasal neurons, endocrine pancreas cells, kidney epithelial cells, cochlea hair cells etc. Participates in T-cell activation by modulating Ca(2+) oscillations after T lymphocyte activation, which is required for NFAT-dependent IL2 production. Involved in myogenic constriction of cerebral arteries. Controls insulin secretion in pancreatic beta-cells.

APPLICATION

To ensure optimal assay performance, AREX recommends conducting reagent titration tailored to each testing system for optimal detection results.

WB	1:500 - 1:2000
IHC	1:50 - 1:200

*Results are sample-specific. Please refer to your local assay conditions and test parameters for reference.

PRODUCT OVERVIEW

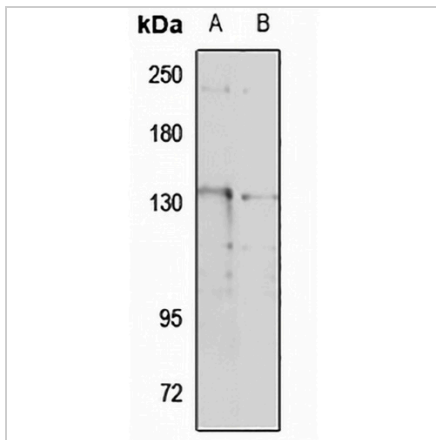
Description	Rabbit polyclonal antibody to TRPM4
Specificity	Recognizes endogenous levels of TRPM4 protein
Antibody Type	Primary antibody
Immunogen	Recombinant fusion protein of human TRPM4. The exact sequence is proprietary.
Purification	The antibody was purified by immunogen affinity chromatography.
Molecular Weight	Predicted: 115; Observed: 134 kD
Form/Buffer	Liquid in 0.42% Potassium phosphate, 0.87% Sodium chloride, pH 7.3, 30% glycerol, and 0.01% sodium azide.
Alternative Names	LTRPC4; Transient receptor potential cation channel subfamily M member 4; hTRPM4; Calcium-activated non-selective cation channel 1; Long transient receptor potential channel 4; LTrpC-4; LTrpC4; Melastatin-4
Gene Symbol	TRPM4
Entrez Gene	54795(Human); 68667(Mouse)
SwissProt	Q8TD43(Human); Q7TN37(Mouse)

*AREX continuously optimizes our products. Webpage content may not reflect the latest updates. For inquiries, please contact info@arexbio.com or your local distributor.

*Clone Number, Reactivity, Source/Host and Clonality can be found in the product name and Key Features section above.

DATASHEET**TRPM4 Rabbit Polyclonal Antibody**

CAT. NO. APA17195

DATA

Western blot analysis of TRPM4 expression in HT29 (A), THP1 (B) whole cell lysates.
(Predicted band size: 115; 118; 134 kD; Observed band size: 134 kD)

STORAGE

Store at 4°C short term. For long term storage, store at -20°C, avoiding freeze/thaw cycles.

NOTE

For Research Use Only. Not for diagnostic, therapeutics, prophylactic or in vivo use.