

DATASHEET

TRPM5 Rabbit Polyclonal Antibody

CAT. NO. APA17196

KEY FEATURES

Target	TRPM5	Source / Host	Rabbit
Reactivity	Human, Mouse	Clonality	Polyclonal
Applications	WB	Conjugation	Unconjugated
Form / Buffer	Liquid in 0.42% Potassium phosphate, 0.87% Sodium chloride, pH 7.3, 30% glycerol, and 0.01% sodium azide.		Storage at -20°C

BACKGROUND

Monovalent cation-selective ion channel activated by intracellular Ca(2+) in a voltage- and temperature-dependent manner in a voltage- and temperature-dependent manner . Mediates the transport of Na(+), K(+) and Cs(+) ions equally well . Activated directly by increase in intracellular Ca(2+), but is impermeable to it . The activation mechanism of TRPM5 involves a multistep process. TRPM5 activation involves ligand binding (i.e., tastant molecule, glucose stimulation) to Gq/G-protein coupled receptors (GPCR) and leads to the breakdown of phosphatidylinositol bisphosphate (PIP2) into diacylglycerol (DAG) and inositol trisphosphate (IP3), IP3 binds to its receptors in the endoplasmic reticulum and cause calcium release.

APPLICATION

To ensure optimal assay performance, AREX recommends conducting reagent titration tailored to each testing system for optimal detection results.

WB	1:500 - 1:2000
----	----------------

*Results are sample-specific. Please refer to your local assay conditions and test parameters for reference.

PRODUCT OVERVIEW

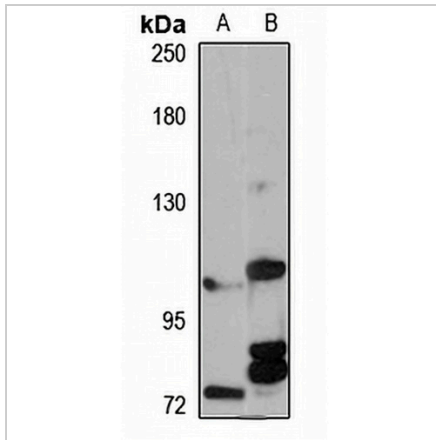
Description	Rabbit polyclonal antibody to TRPM5
Specificity	Recognizes endogenous levels of TRPM5 protein
Antibody Type	Primary antibody
Immunogen	Recombinant fusion protein of human TRPM5. The exact sequence is proprietary.
Purification	The antibody was purified by immunogen affinity chromatography.
Molecular Weight	Predicted: 97; Observed: 112 kD
Form/Buffer	Liquid in 0.42% Potassium phosphate, 0.87% Sodium chloride, pH 7.3, 30% glycerol, and 0.01% sodium azide.
Alternative Names	LTRPC5; MTR1; Transient receptor potential cation channel subfamily M member 5; Long transient receptor potential channel 5; LTrpC-5; LTrpC5; MLSN1- and TRP-related gene 1 protein
Gene Symbol	TRPM5
Entrez Gene	29850(Human); 56843(Mouse)
SwissProt	Q9NZQ8(Human); Q9JJH7(Mouse)

*AREX continuously optimizes our products. Webpage content may not reflect the latest updates. For inquiries, please contact info@arexbio.com or your local distributor.

*Clone Number, Reactivity, Source/Host and Clonality can be found in the product name and Key Features section above.

DATASHEET**TRPM5 Rabbit Polyclonal Antibody**

CAT. NO. APA17196

DATA

Western blot analysis of TRPM5 expression in U87MG (A), mouse brain (B) whole cell lysates. (Predicted band size: 97; 131 kD; Observed band size: 112 kD)

STORAGE

Store at 4°C short term. For long term storage, store at -20°C, avoiding freeze/thaw cycles.

NOTE

For Research Use Only. Not for diagnostic, therapeutics, prophylactic or in vivo use.