

DATASHEET

TRPV6 Rabbit Polyclonal Antibody

CAT. NO. APA17198

KEY FEATURES

Target	TRPV6	Source / Host	Rabbit
Reactivity	Human, Mouse, Rat	Clonality	Polyclonal
Applications	WB	Conjugation	Unconjugated
Form / Buffer	Liquid in 0.42% Potassium phosphate, 0.87% Sodium chloride, pH 7.3, 30% glycerol, and 0.01% sodium azide.		Storage at -20°C

BACKGROUND

Calcium selective cation channel that mediates Ca(2+) uptake in various tissues, including the intestine uptake in various tissues, including the intestine . Important for normal Ca(2+) ion homeostasis in the body, including bone and skin . The channel is activated by low internal calcium level, probably including intracellular calcium store depletion, and the current exhibits an inward rectification . Inactivation includes both a rapid Ca(2+)-dependent and a slower Ca(2+)-calmodulin-dependent mechanism; the latter may be regulated by phosphorylation. In vitro, is slowly inhibited by Mg(2+) in a voltage-independent manner. Heteromeric assembly with TRPV5 seems to modify channel properties. TRPV5-TRPV6 heteromultimeric concatemers exhibit voltage-dependent gating.

APPLICATION

To ensure optimal assay performance, AREX recommends conducting reagent titration tailored to each testing system for optimal detection results.

WB	1:500 - 1:2000
----	----------------

*Results are sample-specific. Please refer to your local assay conditions and test parameters for reference.

PRODUCT OVERVIEW

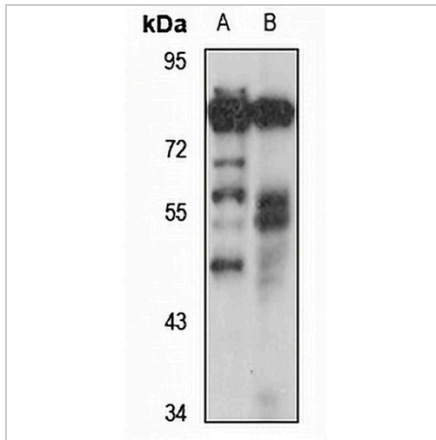
Description	Rabbit polyclonal antibody to TRPV6
Specificity	Recognizes endogenous levels of TRPV6 protein
Antibody Type	Primary antibody
Immunogen	KLH-conjugated synthetic peptide of human TRPV6. The exact sequence is proprietary.
Purification	The antibody was purified by immunogen affinity chromatography.
Molecular Weight	Predicted: 68; Observed: 87 kD
Form/Buffer	Liquid in 0.42% Potassium phosphate, 0.87% Sodium chloride, pH 7.3, 30% glycerol, and 0.01% sodium azide.
Alternative Names	ECAC2; Transient receptor potential cation channel subfamily V member 6; TrpV6; CaT-like; CaT-L; Calcium transport protein 1; CaT1; Epithelial calcium channel 2; ECaC2
Gene Symbol	TRPV6
Entrez Gene	55503(Human); 64177(Mouse)
SwissProt	Q9H1D0(Human); Q91WD2(Mouse)

*AREX continuously optimizes our products. Webpage content may not reflect the latest updates. For inquiries, please contact info@arexbio.com or your local distributor.

*Clone Number, Reactivity, Source/Host and Clonality can be found in the product name and Key Features section above.

DATASHEET**TRPV6 Rabbit Polyclonal Antibody**

CAT. NO. APA17198

DATA

Western blot analysis of TRPV6 expression in HepG2 (A), mouse pancreas (B) whole cell lysates. (Predicted band size: 68; 87 kD; Observed band size: 87 kD)

STORAGE

Store at 4°C short term. For long term storage, store at -20°C, avoiding freeze/thaw cycles.

NOTE

For Research Use Only. Not for diagnostic, therapeutics, prophylactic or in vivo use.