

DATASHEET

TRUB2 Rabbit Polyclonal Antibody

CAT. NO. APA17199

KEY FEATURES

Target	TRUB2	Source / Host	Rabbit
Reactivity	Human	Clonality	Polyclonal
Applications	WB	Conjugation	Unconjugated
Form / Buffer	Liquid in 0.42% Potassium phosphate, 0.87% Sodium chloride, pH 7.3, 30% glycerol, and 0.01% sodium azide.		Storage at -20°C

BACKGROUND

Minor enzyme contributing to the isomerization of uridine to pseudouridine (pseudouridylation) of specific mitochondrial mRNAs (mt-mRNAs) such as COXI and COXIII mt-mRNAs of specific mitochondrial mRNAs (mt-mRNAs) such as COXI and COXIII mt-mRNAs . As a component of a functional protein-RNA module, consisting of RCC1L, NGRN, RPUSD3, RPUSD4, TRUB2, FASTKD2 and 16S mitochondrial ribosomal RNA (16S mt-rRNA), controls 16S mt-rRNA abundance and is required for intra-mitochondrial translation . Also catalyzes pseudouridylation of some tRNAs, including synthesis of pseudouridine(55) from uracil-55, in the psi GC loop of a subset of tRNAs .

APPLICATION

To ensure optimal assay performance, AREX recommends conducting reagent titration tailored to each testing system for optimal detection results.

WB	1:500 - 1:2000
----	----------------

*Results are sample-specific. Please refer to your local assay conditions and test parameters for reference.

PRODUCT OVERVIEW

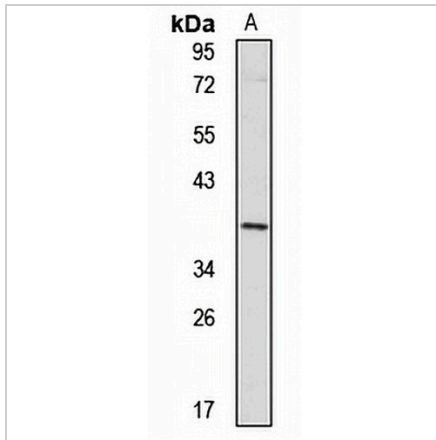
Description	Rabbit polyclonal antibody to TRUB2
Specificity	Recognizes endogenous levels of TRUB2 protein
Antibody Type	Primary antibody
Immunogen	Recombinant fusion protein of human TRUB2. The exact sequence is proprietary.
Purification	The antibody was purified by immunogen affinity chromatography.
Molecular Weight	Predicted: 30; Observed: 37 kD
Form/Buffer	Liquid in 0.42% Potassium phosphate, 0.87% Sodium chloride, pH 7.3, 30% glycerol, and 0.01% sodium azide.
Alternative Names	Probable tRNA pseudouridine synthase 2
Gene Symbol	TRUB2
Entrez Gene	26995(Human)
SwissProt	O95900(Human)

*AREX continuously optimizes our products. Webpage content may not reflect the latest updates. For inquiries, please contact info@arexbio.com or your local distributor.

*Clone Number, Reactivity, Source/Host and Clonality can be found in the product name and Key Features section above.

DATASHEET**TRUB2 Rabbit Polyclonal Antibody**

CAT. NO. APA17199

DATA

Western blot analysis of TRUB2 expression in HeLa (A) whole cell lysates. (Predicted band size: 30; 36 kD; Observed band size: 37 kD)

STORAGE

Store at 4°C short term. For long term storage, store at -20°C, avoiding freeze/thaw cycles.

NOTE

For Research Use Only. Not for diagnostic, therapeutics, prophylactic or in vivo use.