

DATASHEET

Thyrotropin beta Rabbit Polyclonal Antibody

CAT. NO. APA17201

KEY FEATURES

Target	Thyrotropin beta	Source / Host	Rabbit
Reactivity	Human, Mouse, Rat	Clonality	Polyclonal
Applications	WB	Conjugation	Unconjugated
Form / Buffer	Liquid in 0.42% Potassium phosphate, 0.87% Sodium chloride, pH 7.3, 30% glycerol, and 0.01% sodium azide.		Storage at -20°C

BACKGROUND

Indispensable for the control of thyroid structure and metabolism.

APPLICATION

To ensure optimal assay performance, AREX recommends conducting reagent titration tailored to each testing system for optimal detection results.

WB	1:500 - 1:2000
----	----------------

*Results are sample-specific. Please refer to your local assay conditions and test parameters for reference.

PRODUCT OVERVIEW

Description	Rabbit polyclonal antibody to Thyrotropin beta
Specificity	Recognizes endogenous levels of Thyrotropin beta protein
Antibody Type	Primary antibody
Immunogen	KLH-conjugated synthetic peptide of human Thyrotropin beta. The exact sequence is proprietary.
Purification	The antibody was purified by immunogen affinity chromatography.
Molecular Weight	Predicted: 10; Observed: 16 kD
Form/Buffer	Liquid in 0.42% Potassium phosphate, 0.87% Sodium chloride, pH 7.3, 30% glycerol, and 0.01% sodium azide.
Alternative Names	Thyrotropin subunit beta; Thyroid-stimulating hormone subunit beta; TSH-B; TSH-beta; Thyrotropin beta chain; Thyrotropin alfa
Gene Symbol	TSHB
Entrez Gene	7252(Human); 25653(Rat)
SwissProt	P01222(Human); P12656(Mouse); P04652(Rat)

*AREX continuously optimizes our products. Webpage content may not reflect the latest updates. For inquiries, please contact info@arexbio.com or your local distributor.

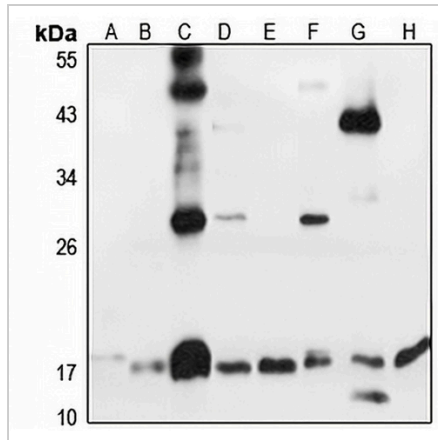
*Clone Number, Reactivity, Source/Host and Clonality can be found in the product name and Key Features section above.

DATASHEET

Thyrotropin beta Rabbit Polyclonal Antibody

CAT. NO. APA17201

DATA



Western blot analysis of Thyrotropin beta expression in HT29 (A), LO2 (B), mouse liver (C), mouse kidney (D), mouse brain (E), rat liver (F), rat kidney (G), rat brain (H) whole cell lysates. (Predicted band size: 10; 15 kD; Observed band size: 16 kD)

STORAGE

Store at 4°C short term. For long term storage, store at -20°C, avoiding freeze/thaw cycles.

NOTE

For Research Use Only. Not for diagnostic, therapeutics, prophylactic or in vivo use.