

**DATASHEET**

**NET-7 Rabbit Polyclonal Antibody**

CAT. NO. APA17203

**KEY FEATURES**

Target	NET-7	Source / Host	Rabbit
Reactivity	Human, Mouse	Clonality	Polyclonal
Applications	WB	Conjugation	Unconjugated
Form / Buffer	Liquid in 0.42% Potassium phosphate, 0.87% Sodium chloride, pH 7.3, 30% glycerol, and 0.01% sodium azide.		Storage at -20°C

**BACKGROUND**

Part of TspanC8 subgroup, composed of 6 members that interact with the transmembrane metalloprotease ADAM10. This interaction is required for ADAM10 exit from the endoplasmic reticulum and for enzymatic maturation and trafficking to the cell surface as well as substrate specificity. Different TspanC8/ADAM10 complexes have distinct substrates. Promotes ADAM10-mediated cleavage of CDH2. Negatively regulates ligand-induced Notch activity probably by regulating ADAM10 activity.

**APPLICATION**

To ensure optimal assay performance, AREX recommends conducting reagent titration tailored to each testing system for optimal detection results.

WB	1:500 - 1:2000
----	----------------

\*Results are sample-specific. Please refer to your local assay conditions and test parameters for reference.

**PRODUCT OVERVIEW**

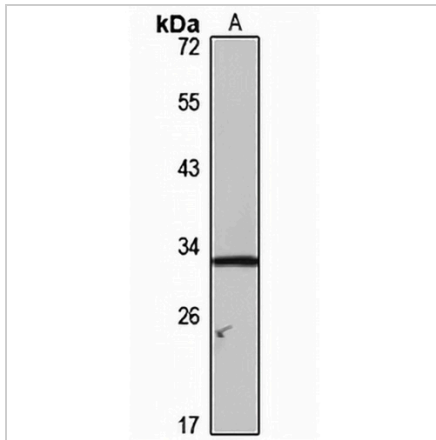
Description	Rabbit polyclonal antibody to NET-7
Specificity	Recognizes endogenous levels of NET-7 protein
Antibody Type	Primary antibody
Immunogen	Recombinant fusion protein of human NET-7. The exact sequence is proprietary.
Purification	The antibody was purified by immunogen affinity chromatography.
Molecular Weight	Predicted: 33 kD; Observed: 33 kD
Form/Buffer	Liquid in 0.42% Potassium phosphate, 0.87% Sodium chloride, pH 7.3, 30% glycerol, and 0.01% sodium azide.
Alternative Names	NET7; TM4SF15; Tetraspanin-15; Tspan-15; Tetraspan NET-7; Transmembrane 4 superfamily member 15
Gene Symbol	TSPAN15
Entrez Gene	23555(Human); 70423(Mouse)
SwissProt	O95858(Human); F7BWT7(Mouse)

\*AREX continuously optimizes our products. Webpage content may not reflect the latest updates. For inquiries, please contact [info@arexbio.com](mailto:info@arexbio.com) or your local distributor.

\*Clone Number, Reactivity, Source/Host and Clonality can be found in the product name and Key Features section above.

**DATASHEET****NET-7 Rabbit Polyclonal Antibody**

CAT. NO. APA17203

**DATA**

Western blot analysis of NET-7 expression in mouse spleen (A) whole cell lysates.  
(Predicted band size: 33 kD; Observed band size: 33 kD)

**STORAGE**

Store at 4°C short term. For long term storage, store at -20°C, avoiding freeze/thaw cycles.

**NOTE**

For Research Use Only. Not for diagnostic, therapeutics, prophylactic or in vivo use.