

DATASHEET

TTC1 Rabbit Polyclonal Antibody

CAT. NO. APA17210

KEY FEATURES

| | | | |
|---------------|---|---------------|---------------------|
| Target | TTC1 | Source / Host | Rabbit |
| Reactivity | Human, Mouse | Clonality | Polyclonal |
| Applications | WB | Conjugation | Unconjugated |
| Form / Buffer | Liquid in 0.42% Potassium phosphate, 0.87% Sodium chloride, pH 7.3, 30% glycerol, and 0.01% sodium azide. | | Storage at -20°C |

BACKGROUND

Adapter protein that plays a role downstream of GNA15 to stimulate Ras activation and subsequent phosphorylation of ERK1/2 independently of phospholipase Cbeta signaling . Mechanistically, interacts with GNA15 and SOS2 to form a macromolecular signaling complex which has a high affinity for HRAS . Additionally, participates in signaling via other G-alpha proteins like GNA14, activating NF-kappa-B through Ras and ERK pathways . Beyond signaling, supports protein homeostasis by cooperating with HSP40 in the HSP70 chaperone cycle, promoting protein folding through the regulated dissociation of the HSP70 inhibitor HSPBP1 .

APPLICATION

To ensure optimal assay performance, AREX recommends conducting reagent titration tailored to each testing system for optimal detection results.

| | |
|----|----------------|
| WB | 1:500 - 1:2000 |
|----|----------------|

*Results are sample-specific. Please refer to your local assay conditions and test parameters for reference.

PRODUCT OVERVIEW

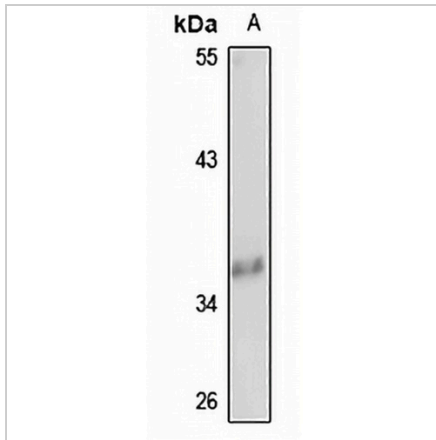
| | |
|-------------------|---|
| Description | Rabbit polyclonal antibody to TTC1 |
| Specificity | Recognizes endogenous levels of TTC1 protein |
| Antibody Type | Primary antibody |
| Immunogen | Recombinant fusion protein of human TTC1. The exact sequence is proprietary. |
| Purification | The antibody was purified by immunogen affinity chromatography. |
| Molecular Weight | Predicted: 33 kD; Observed: 37 kD |
| Form/Buffer | Liquid in 0.42% Potassium phosphate, 0.87% Sodium chloride, pH 7.3, 30% glycerol, and 0.01% sodium azide. |
| Alternative Names | TPR1; Tetratricopeptide repeat protein 1; TPR repeat protein 1 |
| Gene Symbol | TTC1 |
| Entrez Gene | 7265(Human); 66827(Mouse) |
| SwissProt | Q99614(Human); Q91Z38(Mouse) |

*AREX continuously optimizes our products. Webpage content may not reflect the latest updates. For inquiries, please contact info@arexbio.com or your local distributor.

*Clone Number, Reactivity, Source/Host and Clonality can be found in the product name and Key Features section above.

DATASHEET**TTC1 Rabbit Polyclonal Antibody**

CAT. NO. APA17210

DATA

Western blot analysis of TTC1 expression in HEK293T (A) whole cell lysates. (Predicted band size: 33 kD; Observed band size: 37 kD)

STORAGE

Store at 4°C short term. For long term storage, store at -20°C, avoiding freeze/thaw cycles.

NOTE

For Research Use Only. Not for diagnostic, therapeutics, prophylactic or in vivo use.