

DATASHEET

TTC5 Rabbit Polyclonal Antibody

CAT. NO. APA17211

KEY FEATURES

| | | | |
|---------------|---|---------------|---------------------|
| Target | TTC5 | Source / Host | Rabbit |
| Reactivity | Human, Mouse, Rat | Clonality | Polyclonal |
| Applications | WB | Conjugation | Unconjugated |
| Form / Buffer | Liquid in 0.42% Potassium phosphate, 0.87% Sodium chloride, pH 7.3, 30% glycerol, and 0.01% sodium azide. | | Storage at -20°C |

BACKGROUND

Cofactor involved in the regulation of various cellular mechanisms such as actin regulation, autophagy, chromatin regulation and DNA repair . In non-stress conditions, interacts with cofactor JMY in the cytoplasm which prevents JMY's actin nucleation activity and ability to activate the Arp2/3 complex. Acts as a negative regulator of nutrient stress-induced autophagy by preventing JMY's interaction with MAP1LC3B, thereby preventing autophagosome formation . Involves in tubulin autoregulation by promoting its degradation in response to excess soluble tubulin . To do so, associates with the active ribosome near the ribosome exit tunnel and with nascent tubulin polypeptides early during their translation, triggering tubulin mRNA-targeted degradation .

APPLICATION

To ensure optimal assay performance, AREX recommends conducting reagent titration tailored to each testing system for optimal detection results.

| | |
|----|----------------|
| WB | 1:500 - 1:2000 |
|----|----------------|

*Results are sample-specific. Please refer to your local assay conditions and test parameters for reference.

PRODUCT OVERVIEW

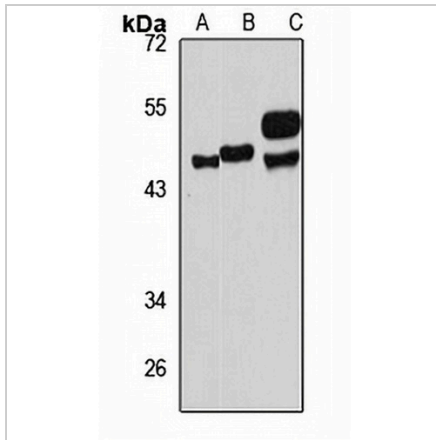
| | |
|-------------------|---|
| Description | Rabbit polyclonal antibody to TTC5 |
| Specificity | Recognizes endogenous levels of TTC5 protein |
| Antibody Type | Primary antibody |
| Immunogen | Recombinant fusion protein of human TTC5. The exact sequence is proprietary. |
| Purification | The antibody was purified by immunogen affinity chromatography. |
| Molecular Weight | Predicted: 48 kD; Observed: 49 kD |
| Form/Buffer | Liquid in 0.42% Potassium phosphate, 0.87% Sodium chloride, pH 7.3, 30% glycerol, and 0.01% sodium azide. |
| Alternative Names | Tetratricopeptide repeat protein 5; TPR repeat protein 5; Stress-responsive activator of p300; Strap |
| Gene Symbol | TTC5 |
| Entrez Gene | 91875(Human); 219022(Mouse); 305837(Rat) |
| SwissProt | Q8N0Z6(Human); Q99LG4(Mouse); Q5BK48(Rat) |

*AREX continuously optimizes our products. Webpage content may not reflect the latest updates. For inquiries, please contact info@arexbio.com or your local distributor.

*Clone Number, Reactivity, Source/Host and Clonality can be found in the product name and Key Features section above.

DATASHEET**TTC5 Rabbit Polyclonal Antibody**

CAT. NO. APA17211

DATA

Western blot analysis of TTC5 expression in MCF7 (A), mouse spleen (B), rat brain (C) whole cell lysates. (Predicted band size: 48 kD; Observed band size: 49 kD)

STORAGE

Store at 4°C short term. For long term storage, store at -20°C, avoiding freeze/thaw cycles.

NOTE

For Research Use Only. Not for diagnostic, therapeutics, prophylactic or in vivo use.