

DATASHEET

TTL Rabbit Polyclonal Antibody

CAT. NO. APA17212

KEY FEATURES

Target	TTL	Source / Host	Rabbit
Reactivity	Human, Mouse, Rat	Clonality	Polyclonal
Applications	WB	Conjugation	Unconjugated
Form / Buffer	Liquid in 0.42% Potassium phosphate, 0.87% Sodium chloride, pH 7.3, 30% glycerol, and 0.01% sodium azide.		Storage at -20°C

BACKGROUND

Catalyzes the post-translational addition of a tyrosine to the C-terminal end of dephosphorylated alpha-tubulin.

APPLICATION

To ensure optimal assay performance, AREX recommends conducting reagent titration tailored to each testing system for optimal detection results.

WB	1:500 - 1:2000
----	----------------

*Results are sample-specific. Please refer to your local assay conditions and test parameters for reference.

PRODUCT OVERVIEW

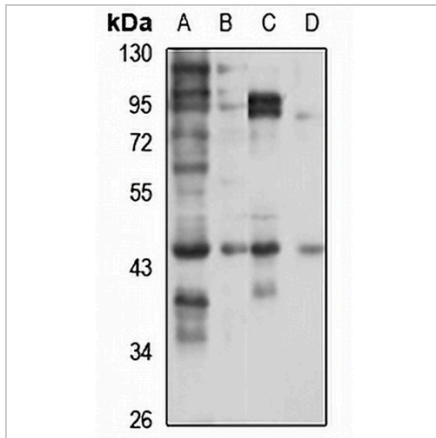
Description	Rabbit polyclonal antibody to TTL
Specificity	Recognizes endogenous levels of TTL protein
Antibody Type	Primary antibody
Immunogen	Recombinant fusion protein of human TTL. The exact sequence is proprietary.
Purification	The antibody was purified by immunogen affinity chromatography.
Molecular Weight	Predicted: 43 kD; Observed: 43 kD
Form/Buffer	Liquid in 0.42% Potassium phosphate, 0.87% Sodium chloride, pH 7.3, 30% glycerol, and 0.01% sodium azide.
Alternative Names	Tubulin--tyrosine ligase; TTL
Gene Symbol	TTL
Entrez Gene	150465(Human); 69737(Mouse); 171572(Rat)
SwissProt	Q8NG68(Human); P38585(Mouse); Q9QXJ0(Rat)

*AREX continuously optimizes our products. Webpage content may not reflect the latest updates. For inquiries, please contact info@arexbio.com or your local distributor.

*Clone Number, Reactivity, Source/Host and Clonality can be found in the product name and Key Features section above.

DATASHEET**TTL Rabbit Polyclonal Antibody**

CAT. NO. APA17212

DATA

Western blot analysis of TTL expression in HeLa (A), SKOV3 (B), mouse brain (C), rat kidney (D) whole cell lysates. (Predicted band size: 43 kD; Observed band size: 43 kD)

STORAGE

Store at 4°C short term. For long term storage, store at -20°C, avoiding freeze/thaw cycles.

NOTE

For Research Use Only. Not for diagnostic, therapeutics, prophylactic or in vivo use.