

**DATASHEET**

**Delta-tubulin Rabbit Polyclonal Antibody**

CAT. NO. APA17216

**KEY FEATURES**

Target	Delta-tubulin	Source / Host	Rabbit
Reactivity	Human	Clonality	Polyclonal
Applications	WB	Conjugation	Unconjugated
Form / Buffer	Liquid in 0.42% Potassium phosphate, 0.87% Sodium chloride, pH 7.3, 30% glycerol, and 0.01% sodium azide.		Storage at-20°C

**BACKGROUND**

Acts as a positive regulator of hedgehog signaling and regulates ciliary function.

**APPLICATION**

To ensure optimal assay performance, AREX recommends conducting reagent titration tailored to each testing system for optimal detection results.

WB	1:500 - 1:1000
----	----------------

\*Results are sample-specific. Please refer to your local assay conditions and test parameters for reference.

**PRODUCT OVERVIEW**

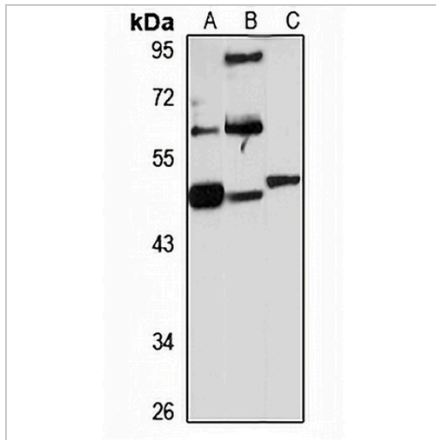
Description	Rabbit polyclonal antibody to Delta-tubulin
Specificity	Recognizes endogenous levels of Delta-tubulin protein
Antibody Type	Primary antibody
Immunogen	Recombinant fusion protein of human Delta-tubulin. The exact sequence is proprietary.
Purification	The antibody was purified by immunogen affinity chromatography.
Molecular Weight	Predicted: 22; Observed: 51 kD
Form/Buffer	Liquid in 0.42% Potassium phosphate, 0.87% Sodium chloride, pH 7.3, 30% glycerol, and 0.01% sodium azide.
Alternative Names	TUBD; Tubulin delta chain; Delta-tubulin
Gene Symbol	TUBD1
Entrez Gene	51174(Human); 56427(Mouse)
SwissProt	Q9UJT1(Human); Q9R1K7(Mouse)

\*AREX continuously optimizes our products. Webpage content may not reflect the latest updates. For inquiries, please contact [info@arex.bio](mailto:info@arex.bio) or your local distributor.

\*Clone Number, Reactivity, Source/Host and Clonality can be found in the product name and Key Features section above.

**DATASHEET****Delta-tubulin Rabbit Polyclonal Antibody**

CAT. NO. APA17216

**DATA**

Western blot analysis of Delta-tubulin expression in MCF7 (A), mouse testis (B), rat testis (C) whole cell lysates. (Predicted band size: 22; 27; 39; 44; 51 kD; Observed band size: 51 kD)

**STORAGE**

Store at 4°C short term. For long term storage, store at -20°C, avoiding freeze/thaw cycles.

**NOTE**

For Research Use Only. Not for diagnostic, therapeutics, prophylactic or in vivo use.