

DATASHEET

Gamma-taxilin Rabbit Polyclonal Antibody

CAT. NO. APA17218

KEY FEATURES

Target	Gamma-taxilin	Source / Host	Rabbit
Reactivity	Human, Mouse	Clonality	Polyclonal
Applications	WB	Conjugation	Unconjugated
Form / Buffer	Liquid in 0.42% Potassium phosphate, 0.87% Sodium chloride, pH 7.3, 30% glycerol, and 0.01% sodium azide.		Storage at-20°C

BACKGROUND

May be involved in intracellular vesicle traffic. Inhibits ATF4-mediated transcription, possibly by dimerizing with ATF4 to form inactive dimers that cannot bind DNA. May be involved in regulating bone mass density through an ATF4-dependent pathway. May be involved in cell cycle progression.

APPLICATION

To ensure optimal assay performance, AREX recommends conducting reagent titration tailored to each testing system for optimal detection results.

WB	1:500 - 1:2000
----	----------------

*Results are sample-specific. Please refer to your local assay conditions and test parameters for reference.

PRODUCT OVERVIEW

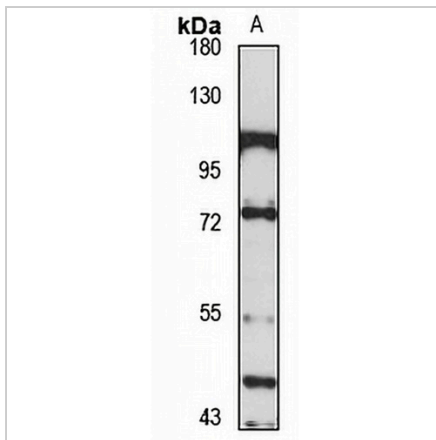
Description	Rabbit polyclonal antibody to Gamma-taxilin
Specificity	Recognizes endogenous levels of Gamma-taxilin protein
Antibody Type	Primary antibody
Immunogen	Recombinant fusion protein of human Gamma-taxilin. The exact sequence is proprietary.
Purification	The antibody was purified by immunogen affinity chromatography.
Molecular Weight	Predicted: 46; Observed: 75 kD
Form/Buffer	Liquid in 0.42% Potassium phosphate, 0.87% Sodium chloride, pH 7.3, 30% glycerol, and 0.01% sodium azide.
Alternative Names	CXorf15; ELRG; LSR5; Gamma-taxilin; Environmental lipopolysaccharide-responding gene protein; Factor inhibiting ATF4-mediated transcription; FIAT; Lipopolysaccharide-specific response protein 5
Gene Symbol	TXLNG
Entrez Gene	55787(Human); 353170(Mouse)
SwissProt	Q9NUQ3(Human); Q8BHN1(Mouse)

*AREX continuously optimizes our products. Webpage content may not reflect the latest updates. For inquiries, please contact info@arexbio.com or your local distributor.

*Clone Number, Reactivity, Source/Host and Clonality can be found in the product name and Key Features section above.

DATASHEET**Gamma-taxilin Rabbit Polyclonal Antibody**

CAT. NO. APA17218

DATA

Western blot analysis of Gamma-taxilin expression in A549 (A) whole cell lysates.
(Predicted band size: 46; 60 kD; Observed band size: 75 kD)

STORAGE

Store at 4°C short term. For long term storage, store at -20°C, avoiding freeze/thaw cycles.

NOTE

For Research Use Only. Not for diagnostic, therapeutics, prophylactic or in vivo use.