

DATASHEET

UBE2D3 Rabbit Polyclonal Antibody

CAT. NO. APA17229

KEY FEATURES

Target	UBE2D3	Source / Host	Rabbit
Reactivity	Human, Mouse, Rat	Clonality	Polyclonal
Applications	WB	Conjugation	Unconjugated
Form / Buffer	Liquid in 0.42% Potassium phosphate, 0.87% Sodium chloride, pH 7.3, 30% glycerol, and 0.01% sodium azide.		Storage at -20°C

BACKGROUND

Accepts ubiquitin from the E1 complex and catalyzes its covalent attachment to other proteins. In vitro catalyzes 'Lys-11', as well as 'Lys-48'-linked polyubiquitination. Cooperates with the E2 CDC34 and the SCF(FBXW11) E3 ligase complex for the polyubiquitination of NFKBIA leading to its subsequent proteasomal degradation. Acts as an initiator E2, priming the phosphorylated NFKBIA target at positions 'Lys-21' and/or 'Lys-22' with a monoubiquitin. Ubiquitin chain elongation is then performed by CDC34, building ubiquitin chains from the UBE2D3-primed NFKBIA-linked ubiquitin. Also acts as an initiator E2, in conjunction with RNF8, for the priming of PCNA.

APPLICATION

To ensure optimal assay performance, AREX recommends conducting reagent titration tailored to each testing system for optimal detection results.

WB	1:500 - 1:2000
----	----------------

*Results are sample-specific. Please refer to your local assay conditions and test parameters for reference.

PRODUCT OVERVIEW

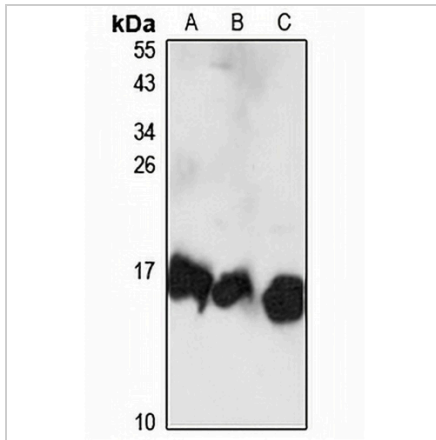
Description	Rabbit polyclonal antibody to UBE2D3
Specificity	Recognizes endogenous levels of UBE2D3 protein
Antibody Type	Primary antibody
Immunogen	KLH-conjugated synthetic peptide of human UBE2D3. The exact sequence is proprietary.
Purification	The antibody was purified by immunogen affinity chromatography.
Molecular Weight	Predicted: 16 kD; Observed: 14 kD
Form/Buffer	Liquid in 0.42% Potassium phosphate, 0.87% Sodium chloride, pH 7.3, 30% glycerol, and 0.01% sodium azide.
Alternative Names	UBC5C; UBCH5C; Ubiquitin-conjugating enzyme E2 D3; Ubiquitin carrier protein D3; Ubiquitin-conjugating enzyme E2(17)KB 3; Ubiquitin-conjugating enzyme E2-17 kDa 3; Ubiquitin-protein ligase D3
Gene Symbol	UBE2D3
Entrez Gene	7323(Human); 66105(Mouse)
SwissProt	P61077(Human); P61079(Mouse)

*AREX continuously optimizes our products. Webpage content may not reflect the latest updates. For inquiries, please contact info@arex.bio or your local distributor.

*Clone Number, Reactivity, Source/Host and Clonality can be found in the product name and Key Features section above.

DATASHEET**UBE2D3 Rabbit Polyclonal Antibody**

CAT. NO. APA17229

DATA

Western blot analysis of UBE2D3 expression in Jurkat (A), HeLa (B), mouse thymus (C) whole cell lysates. (Predicted band size: 16 kD; Observed band size: 14 kD)

STORAGE

Store at 4°C short term. For long term storage, store at -20°C, avoiding freeze/thaw cycles.

NOTE

For Research Use Only. Not for diagnostic, therapeutics, prophylactic or in vivo use.