

DATASHEET

UBE2K Rabbit Polyclonal Antibody

CAT. NO. APA17230

KEY FEATURES

Target	UBE2K	Source / Host	Rabbit
Reactivity	Human, Mouse	Clonality	Polyclonal
Applications	WB	Conjugation	Unconjugated
Form / Buffer	Liquid in 0.42% Potassium phosphate, 0.87% Sodium chloride, pH 7.3, 30% glycerol, and 0.01% sodium azide.		Storage at -20°C

BACKGROUND

Accepts ubiquitin from the E1 complex and catalyzes its covalent attachment to other proteins. In vitro, in the presence or in the absence of BRCA1-BARD1 E3 ubiquitin-protein ligase complex, catalyzes the synthesis of 'Lys-48'-linked polyubiquitin chains. Does not transfer ubiquitin directly to but elongates monoubiquitinated substrate protein. Mediates the selective degradation of short-lived and abnormal proteins, such as the endoplasmic reticulum-associated degradation (ERAD) of misfolded luminal proteins. Ubiquitinates huntingtin. May mediate foam cell formation by the suppression of apoptosis of lipid-bearing macrophages through ubiquitination and subsequent degradation of p53/TP53.

APPLICATION

To ensure optimal assay performance, AREX recommends conducting reagent titration tailored to each testing system for optimal detection results.

WB	1:500 - 1:2000
----	----------------

*Results are sample-specific. Please refer to your local assay conditions and test parameters for reference.

PRODUCT OVERVIEW

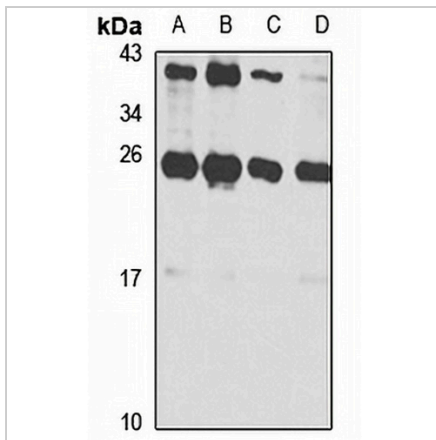
Description	Rabbit polyclonal antibody to UBE2K
Specificity	Recognizes endogenous levels of UBE2K protein
Antibody Type	Primary antibody
Immunogen	KLH-conjugated synthetic peptide of human UBE2K. The exact sequence is proprietary.
Purification	The antibody was purified by immunogen affinity chromatography.
Molecular Weight	Predicted: 16; Observed: 22 kD
Form/Buffer	Liquid in 0.42% Potassium phosphate, 0.87% Sodium chloride, pH 7.3, 30% glycerol, and 0.01% sodium azide.
Alternative Names	HIP2; LIG; Ubiquitin-conjugating enzyme E2 K; Huntingtin-interacting protein 2; HIP-2; Ubiquitin carrier protein; Ubiquitin-conjugating enzyme E2-25 kDa; Ubiquitin-conjugating enzyme E2(25K); Ubiquitin-conjugating enzyme E2-25K; Ubiquitin-protein ligase
Gene Symbol	UBE2K
Entrez Gene	3093(Human); 53323(Mouse)
SwissProt	P61086(Human); P61087(Mouse)

*AREX continuously optimizes our products. Webpage content may not reflect the latest updates. For inquiries, please contact info@arexbio.com or your local distributor.

*Clone Number, Reactivity, Source/Host and Clonality can be found in the product name and Key Features section above.

DATASHEET**UBE2K Rabbit Polyclonal Antibody**

CAT. NO. APA17230

DATA

Western blot analysis of UBE2K expression in SW480 (A), HL60 (B), Raji (C), MCF7 (D) whole cell lysates. (Predicted band size: 16; 17; 22 kD; Observed band size: 22 kD)

STORAGE

Store at 4°C short term. For long term storage, store at -20°C, avoiding freeze/thaw cycles.

NOTE

For Research Use Only. Not for diagnostic, therapeutics, prophylactic or in vivo use.