

## DATASHEET

# UBE2L6 Rabbit Polyclonal Antibody

CAT. NO. APA17231

### KEY FEATURES

Target	UBE2L6	Source / Host	Rabbit
Reactivity	Human, Mouse, Rat	Clonality	Polyclonal
Applications	WB, IF/ICC	Conjugation	Unconjugated
Form / Buffer	Liquid in 0.42% Potassium phosphate, 0.87% Sodium chloride, pH 7.3, 30% glycerol, and 0.01% sodium azide.		Storage at -20°C

### BACKGROUND

Catalyzes the covalent attachment of ubiquitin or ISG15 to other proteins. Functions in the E6/E6-AP-induced ubiquitination of p53/TP53. Promotes ubiquitination and subsequent proteasomal degradation of FLT3.

### APPLICATION

To ensure optimal assay performance, AREX recommends conducting reagent titration tailored to each testing system for optimal detection results.

WB	1:500 - 1:2000
IF/ICC	1:50 - 1:200

\*Results are sample-specific. Please refer to your local assay conditions and test parameters for reference.

### PRODUCT OVERVIEW

Description	Rabbit polyclonal antibody to UBE2L6
Specificity	Recognizes endogenous levels of UBE2L6 protein
Antibody Type	Primary antibody
Immunogen	KLH-conjugated synthetic peptide of human UBE2L6. The exact sequence is proprietary.
Purification	The antibody was purified by immunogen affinity chromatography.
Molecular Weight	Predicted: 10; Observed: 18 kD
Form/Buffer	Liquid in 0.42% Potassium phosphate, 0.87% Sodium chloride, pH 7.3, 30% glycerol, and 0.01% sodium azide.
Alternative Names	UBCH8; Ubiquitin/ISG15-conjugating enzyme E2 L6; Retinoic acid-induced gene B protein; RIG-B; Ubch8; Ubiquitin carrier protein L6; Ubiquitin-protein ligase L6
Gene Symbol	UBE2L6
Entrez Gene	9246(Human); 56791(Mouse); 295704(Rat)
SwissProt	O14933(Human); Q9QZU9(Mouse); Q4V8J2(Rat)

\*AREX continuously optimizes our products. Webpage content may not reflect the latest updates. For inquiries, please contact [info@arexbio.com](mailto:info@arexbio.com) or your local distributor.

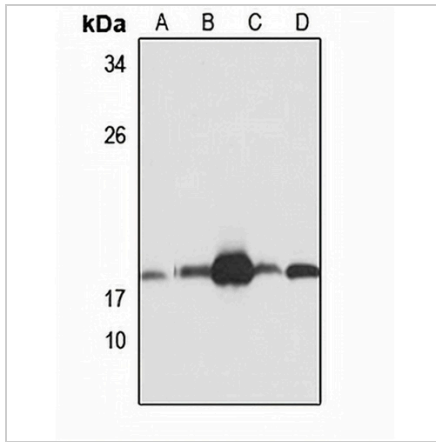
\*Clone Number, Reactivity, Source/Host and Clonality can be found in the product name and Key Features section above.

**DATASHEET**

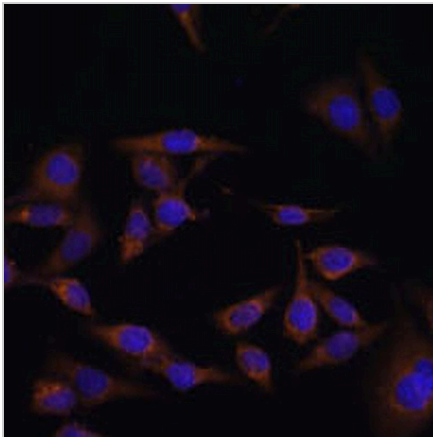
**UBE2L6 Rabbit Polyclonal Antibody**

CAT. NO. APA17231

**DATA**



Western blot analysis of UBE2L6 expression in Jurkat (A), mouse lung (B), mouse spleen (C), rat kidney (D), rat liver (E) whole cell lysates. (Predicted band size: 10; 17 kD; Observed band size: 18 kD)



Immunofluorescent analysis of UBE2L6 staining in HeLa cells. Formalin-fixed cells were permeabilized with 0.1% Triton X-100 in TBS for 5-10 minutes and blocked with 3% BSA-PBS for 30 minutes at room temperature. Cells were probed with the primary antibody in 3% BSA-PBS and incubated overnight at 4 °C in a humidified chamber. Cells were washed with PBST and incubated with a AREX® Fluor 594-conjugated secondary antibody (red) in PBS at room temperature in the dark. DAPI was used to stain the cell nuclei (blue).

**STORAGE**

Store at 4°C short term. For long term storage, store at -20°C, avoiding freeze/thaw cycles.

**NOTE**

For Research Use Only. Not for diagnostic, therapeutics, prophylactic or in vivo use.