

DATASHEET

UBE2W Rabbit Polyclonal Antibody

CAT. NO. APA17232

KEY FEATURES

Target	UBE2W	Source / Host	Rabbit
Reactivity	Human, Mouse, Rat	Clonality	Polyclonal
Applications	WB	Conjugation	Unconjugated
Form / Buffer	Liquid in 0.42% Potassium phosphate, 0.87% Sodium chloride, pH 7.3, 30% glycerol, and 0.01% sodium azide.		Storage at -20°C

BACKGROUND

Accepts ubiquitin from the E1 complex and catalyzes its covalent attachment to other proteins. Specifically monoubiquitinates the N-terminus of various substrates, including ATXN3, MAPT/TAU, POLR2H/RPB8 and STUB1/CHIP, by recognizing backbone atoms of disordered N-termini. Involved in degradation of misfolded chaperone substrates by mediating monoubiquitination of STUB1/CHIP, leading to recruitment of ATXN3 to monoubiquitinated STUB1/CHIP, and restriction of the length of ubiquitin chain attached to STUB1/CHIP substrates by ATXN3.

APPLICATION

To ensure optimal assay performance, AREX recommends conducting reagent titration tailored to each testing system for optimal detection results.

WB	1:500 - 1:2000
----	----------------

*Results are sample-specific. Please refer to your local assay conditions and test parameters for reference.

PRODUCT OVERVIEW

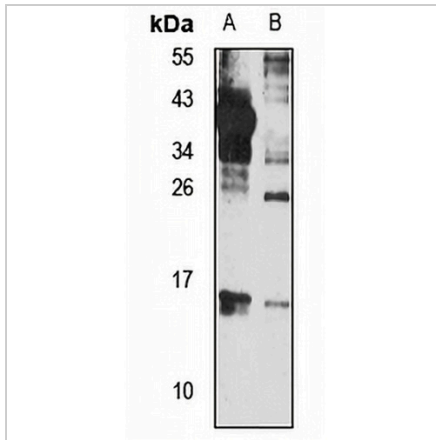
Description	Rabbit polyclonal antibody to UBE2W
Specificity	Recognizes endogenous levels of UBE2W protein
Antibody Type	Primary antibody
Immunogen	Recombinant fusion protein of human UBE2W. The exact sequence is proprietary.
Purification	The antibody was purified by immunogen affinity chromatography.
Molecular Weight	Predicted: 17; Observed: 17 kD
Form/Buffer	Liquid in 0.42% Potassium phosphate, 0.87% Sodium chloride, pH 7.3, 30% glycerol, and 0.01% sodium azide.
Alternative Names	UBC16; Ubiquitin-conjugating enzyme E2 W; N-terminus-conjugating E2; Ubiquitin carrier protein W; Ubiquitin-conjugating enzyme 16; UBC-16; Ubiquitin-protein ligase W
Gene Symbol	UBE2W
Entrez Gene	55284(Human); 66799(Mouse)
SwissProt	Q96B02(Human); Q8VDW4(Mouse); B5DEI4(Rat)

*AREX continuously optimizes our products. Webpage content may not reflect the latest updates. For inquiries, please contact info@arexbio.com or your local distributor.

*Clone Number, Reactivity, Source/Host and Clonality can be found in the product name and Key Features section above.

DATASHEET**UBE2W Rabbit Polyclonal Antibody**

CAT. NO. APA17232

DATA

Western blot analysis of UBE2W expression in MCF7 (A), mouse testis (B) whole cell lysates. (Predicted band size: 17; 18; 20 kD; Observed band size: 17 kD)

STORAGE

Store at 4°C short term. For long term storage, store at -20°C, avoiding freeze/thaw cycles.

NOTE

For Research Use Only. Not for diagnostic, therapeutics, prophylactic or in vivo use.